



The data consortium consists of Denver Regional Council of Governments members and regional partners with an interest in geospatial data and collaboration. The data consortium newsletter improves communication among local geographic information systems professionals and features updates from all levels of government as they relate to data and geospatial initiatives in our region. This newsletter is published quarterly.

State Demography Office website updated

Article submitted by Adam Bickford, data analyst and outreach coordinator at the State Demography Office in the Colorado Department of Local Affairs. Adam can be reached at adam.bickford@state.co.us.

The State Demography Office has updated [its website](#) to streamline data access and to standardize its applications. The homepage now displays basic state- and county-level data from the State Demography Office and U.S. Census databases. The homepage interface provides direct links to State Demography Office visualizations, spreadsheets and custom table applications. Data is available for Colorado regions, counties and municipalities. Maps, spreadsheets and technical documentation for the decennial census and American Community Survey data are also available.

Applications on the [State Demography Office website](#) include visualizations and maps highlighting the age distribution of residents within Colorado counties, population by race and ethnicity estimates, population density, county and regional migration patterns, housing and household estimates, job sector changes and American Community Survey maps of selected demographic characteristics for the

state. Applications are interactive and provide downloadable charts that can be included in reports and presentations. Applications also provide data tables and access to the data source.

Spreadsheets and custom table applications provide data for specific geographies. The datasets can be integrated into user databases and used in analyses.

Upcoming changes to the [State Demography Office website](#) include a revision of the Colorado Demographic Profiles application to provide data summaries for Colorado regions and to improve the tool's interactivity. The Colorado Demographic Profiles application remains available from the homepage, and will be updated with current data until 2023.

State Demography Office
 The primary source for Colorado population and demographic information

The State Demography Office provides population estimates and forecasts for Colorado's regions, counties, and municipalities developed by the State Demography Office and the U.S. Census Bureau.

You can access data visualizations, data spreadsheets, data lookup applications, data spreadsheets, data links, and technical documentation by topic or geography by clicking on one of the buttons on the left.

[New Items \(4/9/2022\)](#)

- [2016-2020 ACS Interactive Map](#)
- [2016-2020 ACS Data available from SDO Census API](#)
- [2020 Population Summary](#)
- [Q1 2022 Webinar: Q1 2022 SDO Website Updates](#)

[SDO Website Tutorials](#)
[SDO Legacy Website \(pre 1/2022\)](#)
[SDO Colorado Story Map](#)

Home

Data by Topic

- [Population](#)
- [Births, Deaths, & Migration](#)
- [Housing & Households](#)
- [Economy & Jobs](#)
- [Census Resources](#)
- [GIS Data and Resources](#)
- [Download Data](#)

Data by Geography

- [State & Regional Data](#)

Select County:

Population Estimates by Age		Single Year of Age Lookup	
Ages	Number, 2019	Number, 2020	2030 Forecast
Total	5,734,932	5,782,902	6,499,620
0 to 17	1,256,578	1,248,342	1,257,273
18 to 24	558,558	561,195	598,938
25 to 44	1,651,038	1,670,198	1,924,833
45 to 64	1,429,911	1,430,818	1,531,521
65 +	839,849	872,349	1,187,057
Components of Change		Components of Change Lookup	
Component	Number, 2019	Number, 2020	Change
Births	62,484	62,609	0.52%
Deaths	38,649	42,148	9.06%
Net Migration	34,162	27,340	-19.97%
Race/Ethnicity: 2020		Race/Ethnicity Lookup	
Race/Ethnicity	Percentage, 2020	Number, 2020	2030 Forecast
Hispanic	22.01%	1,272,676	1,683,113
White NH	68.60%	3,966,849	4,185,288
Black NH	4.73%	273,610	312,816
Asian/ Pacific Islander NH	3.91%	225,861	312,528
American Indian NH	0.76%	43,909	50,838

State Demography Summit

The [State Demography Summit](#) will be held virtually on Friday, Nov. 4. Presenters at the annual meeting will cover demographic trends shaping Colorado. Sessions will take a comprehensive look at the latest demographic and economic data, with special consideration of the demographic effects of the COVID-19 pandemic. Continuing education credits are available for real estate appraisers and real estate agents. Registration for this year's summit is free, but required. Registration opened Oct. 4. [Register at the State Demography Office website.](#)

Please contact Adam Bickford at adam.bickford@state.co.us if you have questions about the State Demography Office website or the State Demography Summit.

You're invited to shape the regional crash data consortium

Article submitted by Erik Braaten, senior planner at DRCOG. Erik can be reached at 303-480-6711 or ebraaten@drcog.org.

DRCOG is coordinating a novel regional crash data consortium and invites users of crash data to guide its vision and mission. DRCOG will host a virtual consortium kick-off at 10 a.m. Thursday, Nov. 10.

Crash data collection, processing, dissemination and analysis are multifaceted and complex issues. DRCOG has been processing regional crash data from the Colorado Department of Transportation for several years and distributes data through the [Regional Data Catalog](#). Some local jurisdictions process their own data or obtain data from a vendor. Agency staff use of various data sources and processing workflows leads to discrepancies and inconsistent analyses of crash data around the region. DRCOG staff intends to fully understand the needs and use cases of crash data for local jurisdictions, improve workflows and reduce duplication of efforts.

The crash data consortium kick-off will allow participants and interested parties to connect and shape the future of the crash data consortium. Participants will be invited to attend three consortium meetings in 2023 to form a shared understanding of challenges around using regional crash data. They'll explore opportunities to improve the accuracy, use and coordination of crash data at the regional level to ultimately help achieve regional traffic safety goals. Through consortium meetings, DRCOG staff and participants will investigate and demonstrate the value of the consortium to improving how crash data is collected, processed and analyzed.

To participate in the crash data consortium or follow its work, please complete the short form at the [crash data consortium ArcGIS site](#).

Please contact Erik Braaten at ebraaten@drcog.org with any questions.

Attend the Association of Transportation Safety Information Professionals Traffic Records Forum

Article submitted by Josh Sender, traffic safety and multimodal engineer at Adams County. Josh can be reached at 720-523-6931 or jsender@adcogov.org.

Whether knowingly or unknowingly, geographic information systems professionals are essential to traffic and traffic safety. The general public often hears that community decisions should be data-driven. Successful data-driven decisions, however, depend on professionals who serve as gatekeepers, maintainers, analyzers, editors, publishers and overall champions of important, and often nebulous, data.

For those who work in the traffic and traffic safety sector, the Traffic Records Forum, hosted by the Association of Transportation Safety Information Professionals, provides an opportunity to learn from similarly minded peers (read: data nerds) about best practices for handling traffic safety data. Traffic safety data comes in many forms – including crash, DUI, highway and vehicle data. One can easily get lost in the amount of data, let alone the types of analyses and cross-referencing traffic safety professionals want to use such data for.

I attended the most recent forum, held Aug. 7-10 at the Hilton Denver City Center. At the forum, I learned valuable information ranging from how to turn an Excel spreadsheet analysis of crash data into a Python-based web app, to more advanced information like how traffic data collection and analysis can directly effect how equitable the world is.

As with any conference, the forum not only facilitates learning, but networking with colleagues, too. Even the most well thought-out plans require buy-in and support of peers, management or members of the public. Building the kind of relationships the forum facilitates is key to taking a great plan from theory to implementation, whether by establishing trust that peers and partners won't misuse or misrepresent data, or that collaborators can be confident in their final message because everyone has had an opportunity to offer input.

Yes, the forum is a time and financial commitment. However, I've always considered it time well spent and would recommend it to anyone involved in the traffic safety world.

DRCOG publishes new regional traffic signals web map

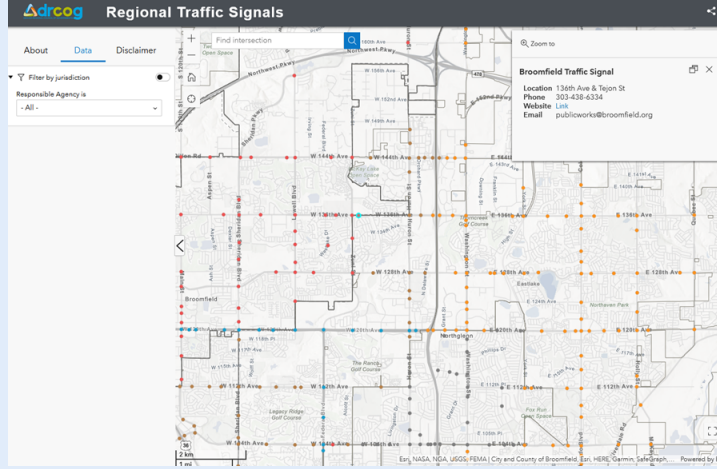
Article by Jenny Wallace, GISP, geographic information systems program manager at DRCOG. Jenny can be reached at 303-480-6754 or jwallace@drcog.org.

Have you ever come across a broken traffic signal while driving and wondered who to contact? DRCOG has a web map for that!

In the Denver region, approximately 35 jurisdictions operate traffic signals. Each jurisdiction monitors and controls signal operations using systems to optimize safety and efficiency for all travelers (cars, trucks, transit vehicles, pedestrians and bicycles). DRCOG leads efforts to ensure signal operations are coordinated across jurisdictional boundaries through its [Traffic Operations Program](#). But since the intersection equipment is owned and operated by each jurisdiction, contact information for each signal varies.

The [Regional Traffic Signals](#) map is DRCOG's newest web map. Staff developed it to help users discover which jurisdiction owns traffic signals and contact them to report the outage. Traffic signals are represented as points on the map and are color-coded by the responsible jurisdiction. When the map user clicks on a point, signal and contact information for the jurisdiction appears. Users can also filter signals by the responsible jurisdiction. DRCOG's Regional Transportation Operations Working Group vetted contact information for each jurisdiction. DRCOG staff will regularly update the web map.

Please check out the [Regional Traffic Signals](#) map. As always, DRCOG staff welcomes and appreciates feedback!



Data consortium annual survey

Your feedback is important to DRCOG's staff that facilitates the data consortium! Please tell us how we can serve you better by filling out the [2022 Denver Region Data Consortium survey](#) by Nov. 7.

[Take the survey](#)

DRCOG census reliability map is live!

Over the last year, DRCOG staff has investigated U.S. Census Bureau American Community Survey data reliability and how its reliability can impact data decisions, and published its findings in a [census data reliability story map](#). If you missed the March data consortium presentation by Rachel Pierstorff and Byron Schuldt (GIS specialists at DRCOG), you have another chance to attend their presentation at the State Demography Summit on Nov. 4. The DRCOG team created the story map to help describe its work and how you might consider taking data reliability into account.

[Visit the story map](#)

Engage with data consortium facilitators

- This quarterly newsletter reaches more than 400 people, has a higher-than-average open rate, and is written by professionals like you. It is the perfect place to show off your projects, highlight your innovative work and contribute ideas to the geographic information systems community in the Denver region. Newsletter publication dates are the 15th of January, April, July, and October (or the next business day). Please contact Jenny Wallace at 303-480-6754 or jwallace@drcog.org to contribute.
- Did you miss a newsletter or a meeting? [Visit the DRCOG website](#) for past newsletter issues and data consortium meeting materials.



Denver Regional Council of Governments
1001 17th St., Suite 700, Denver, CO 80202

[Preferences](#) | [Unsubscribe](#)