



Denver Regional Council of Governments

A voluntary association of 52 county and municipal governments dedicated to making the nine-county Denver region a great place to live, work and play.

Board Chair: Rod Bockenfeld
Executive Director: Jennifer Schaufele

1290 Broadway
Suite 700
Denver, CO 80203
303.455.1000
www.drcog.org

INSIDE THIS PROFILE

Current Estimates 1

Trends Over Time 2

Land Use 3

Transportation 4

Census Data 6

Environment 8

Throughout this profile, Federal Heights is compared to the DRCOG region, which includes Adams, Arapahoe, Boulder, Broomfield, Clear Creek, Denver, Douglas, Gilpin and Jefferson counties. Federal Heights is also compared to other communities within the DRCOG region that are similar in size or geographic location.

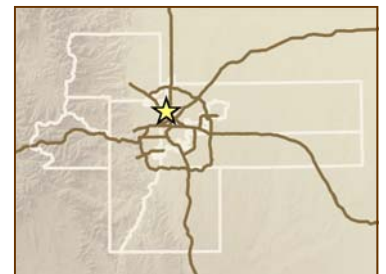
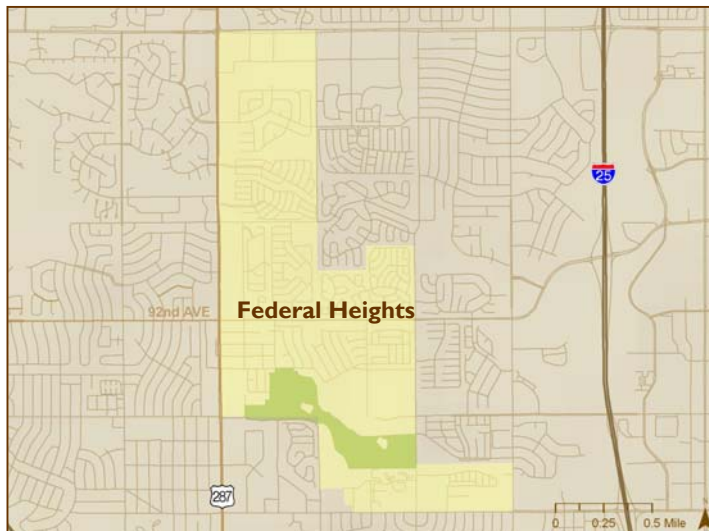
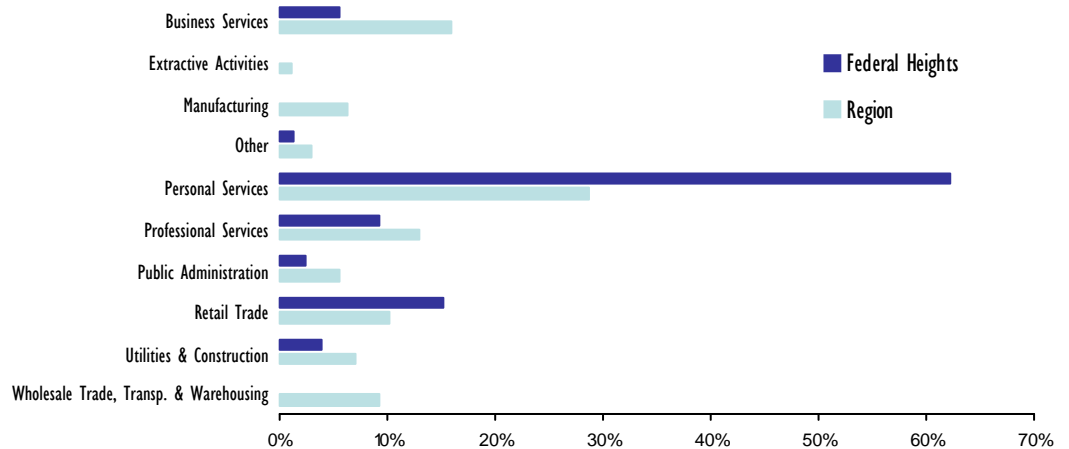
Federal Heights Community Profile

Current Estimates (2008)

	Federal Heights	Erie	Northglenn	Region
Population	12,109	14,958	36,457	2,863,806
Employment	3,826	1,873	8,381	1,427,907
Employers	167	407	705	101,202
Average Annual Wage*	\$16,729	\$31,912	\$28,268	\$45,512
Average Household Size	2.35	2.83	2.71	2.58
Percent Multifamily Housing Units	35%	13%	27%	28%
New Housing Units Built 2005-2006	27	360	0	25,003
Vacancy Rate	4.90%	5.40%	5.80%	5.00%

* Workers employed in the community

Employment By Industry



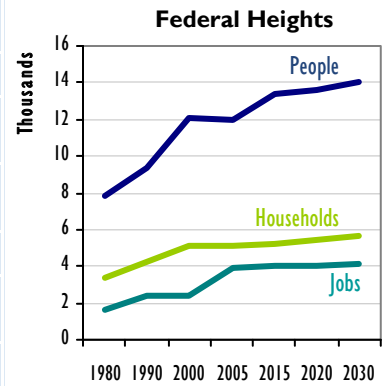
DRCOG Board Representative:
Joyce Thomas

Community Website:
www.ci.federal-heights.co.us

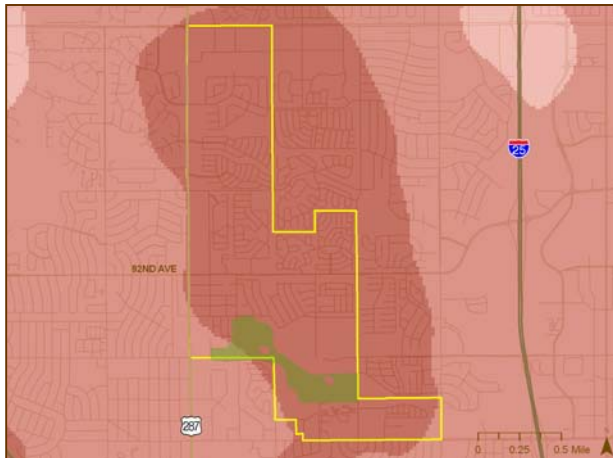
Federal Heights Community Profile

Trends Over Time

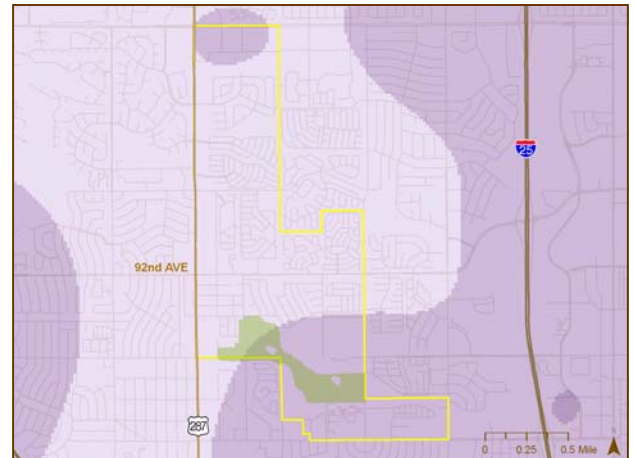
	Federal Heights	Erie	Northglenn	Region
2030 Population	14,040	43,200	40,987	3,875,200
Population Growth 1980-2005	55%	1044%	24%	67%
Population Growth 2005-2030	16%	201%	11%	43%
2030 Employment	4,148	8,149	14,634	2,364,800
Employment Growth 1980-2005	133%	3953%	81%	71%
Employment Growth 2005-2030	7%	328%	28%	49%



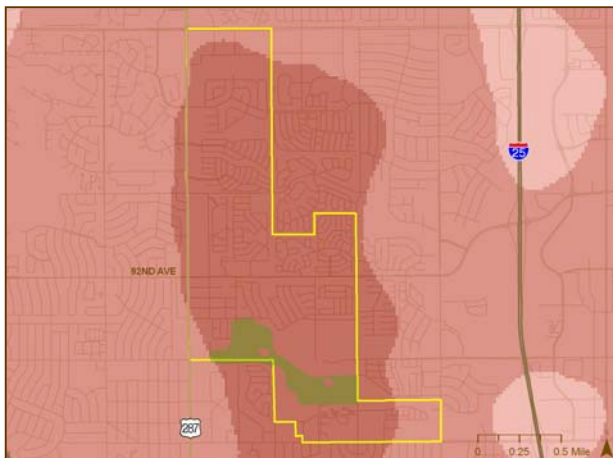
2005 Household Density



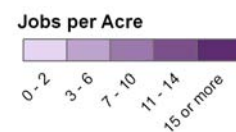
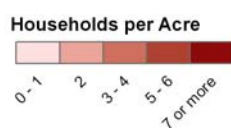
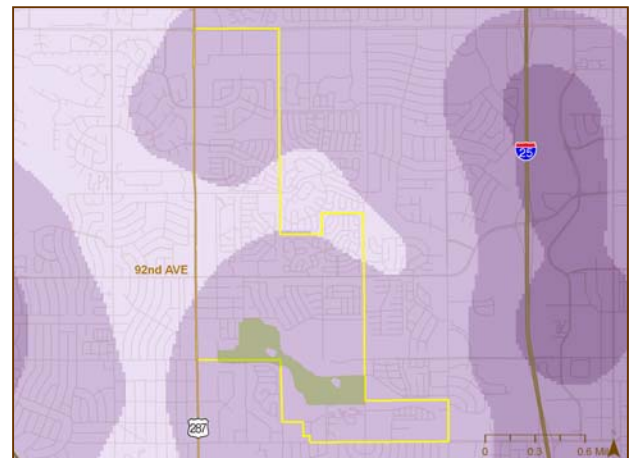
2005 Employment Density



2030 Household Density



2030 Employment Density

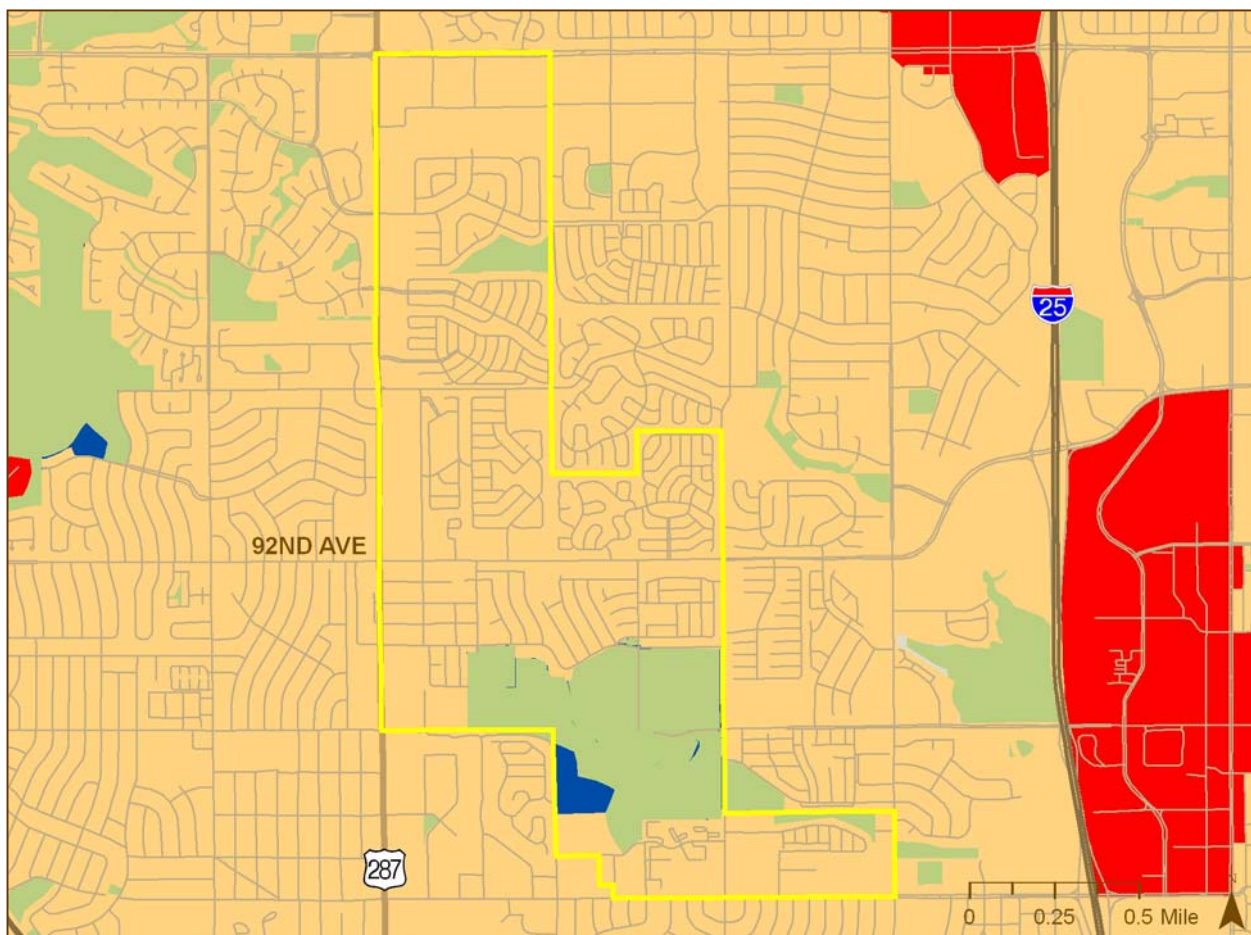


Federal Heights Community Profile

Current and Future Land Use

	Federal Heights	Erie	Northglenn	Region
Total Land Area (Square Miles)	1.8	14	7.4	5,108.30
2030 Urban Growth/Boundary Area (Square Miles)	1.8	17.2	6.1	776.2
Percent Urbanized in 2006	83%	44%	80%	14%
Annual Percent Increase in Urbanized Area 2006-2030	0.00%	4.80%	0.00%	1.00%

Metro Vision 2030 Land Use Elements



- Existing Urbanized Area
- Semi-Urban Development
- 2030 Urban Growth Boundary*
- Urban Centers
- Open Space

What is Metro Vision 2030?

Metro Vision 2030 is a long-range plan to manage growth within the Denver area. It addresses development, transportation needs and ways to preserve environmental quality. Bringing communities together for regional cooperation is the plan's most important goal. The map above shows Metro Vision elements relevant to land use. Metro Vision does not address development activity occurring on specific parcels of land; that is the responsibility of local jurisdictions.

*Map does not show UGB for Urban Growth Area Communities: Aurora, Castle Rock, Longmont, Thornton and Adams County

Federal Heights Community Profile

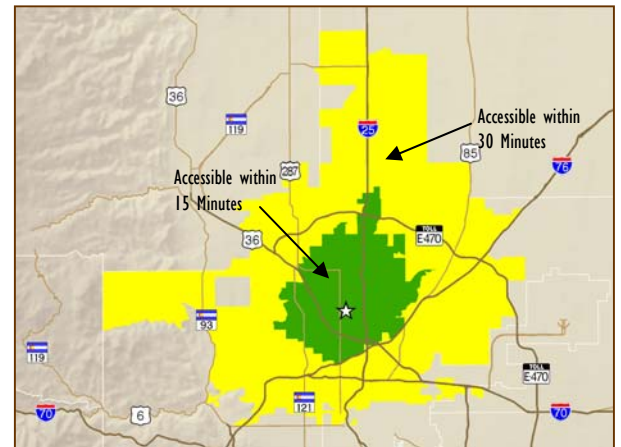
Existing Transportation System

2005 Data (Unless Noted)	Federal Heights	Erie	Northglenn	Region
Vehicle Miles Traveled (VMT) per Day	130,060	108,419	623,553	66,308,086
Roadways With 3+ Hours of Severe Congestion (Lane Miles)	4	1	20	1,418
Injury and Fatality Crashes (2004)	38	14	185	18,454
Transit Share of Work Trips	5%	1%	4%	4%
Share of Population with Good Access to Jobs By Transit	10%	0%	0%	34%

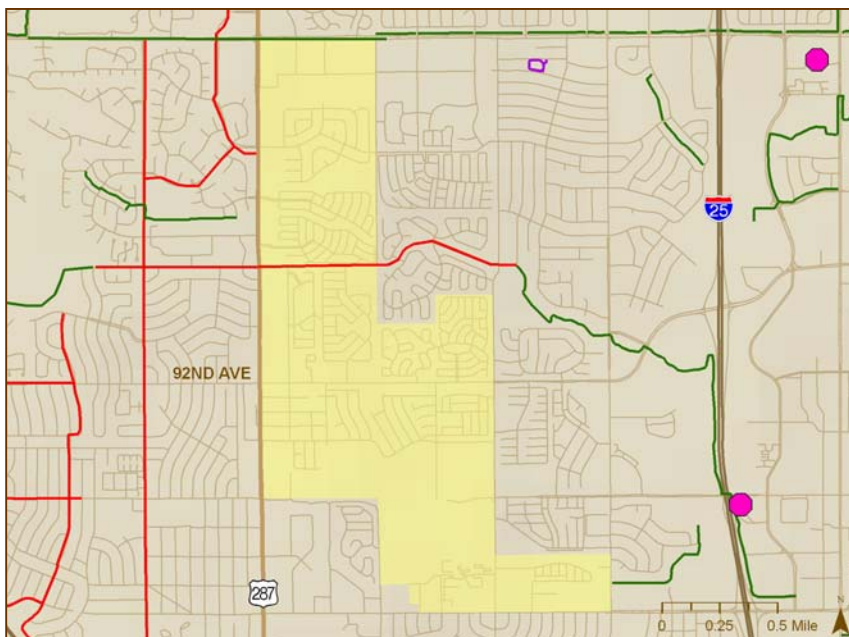
Average Daily Traffic (Thousands)



Driving Times (AM Peak Period)

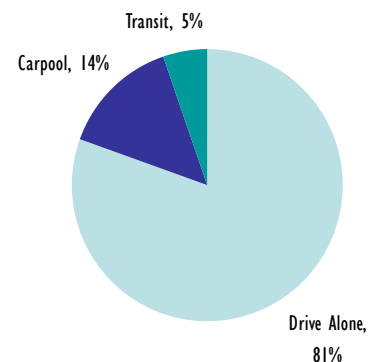


Transit and Bicycle Facilities



- | Transit Facilities | Bicycle Facilities |
|--------------------|--------------------|
| Station | On Road |
| park-n-Ride | Off Road |
| Rapid Transit | Neighborhood |

Means of Transportation to Work



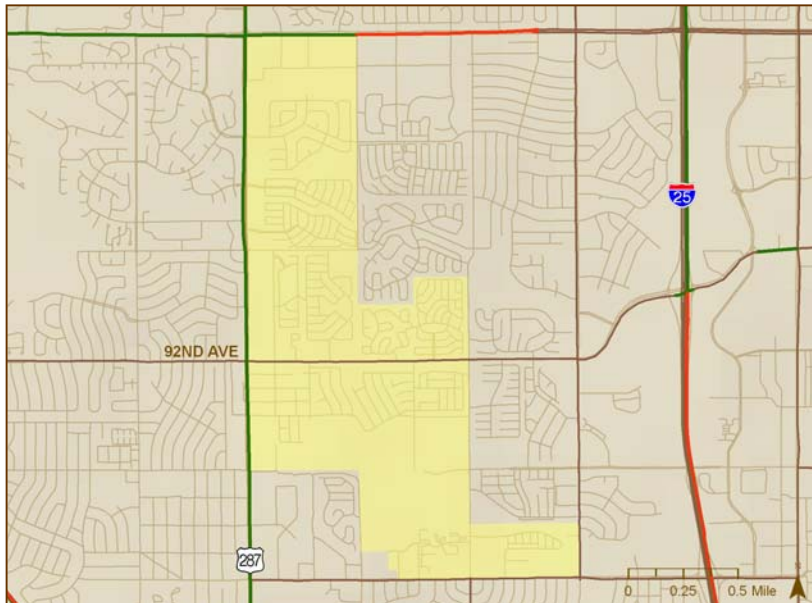
Federal Heights Community Profile

2030 Transportation Plans

Revenue Sources for Transportation Improvements in Federal Heights

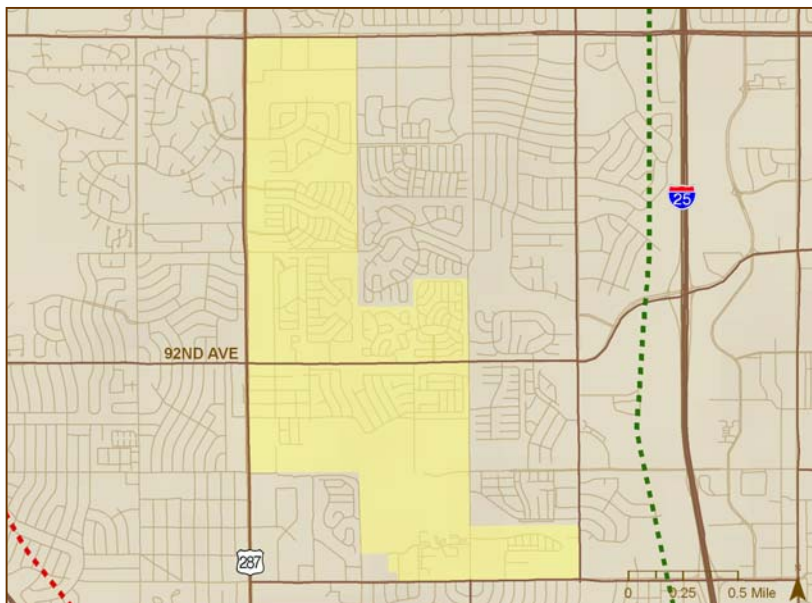
Major Improvements Planned for Federal Heights (2007-2012 Transportation Improvement Program)	Cost (Thousands)	Completion Date
<i>No Data</i>		

No Data



Roadway Improvements

- Roadway (Funded)
- Roadway (Unfunded)
- Interchange (Funded)
- Interchange (Unfunded)



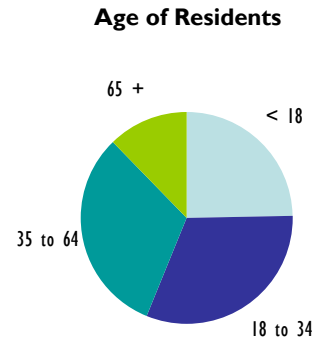
Transit and High Occupancy Vehicle (HOV) Improvements

- - - Rapid Transit (Funded)
- - - Rapid Transit (Unfunded)
- - - High Occupancy Vehicle/
Bus Rapid Transit (Funded)
- - - High Occupancy Vehicle/
Bus Rapid Transit (Unfunded)

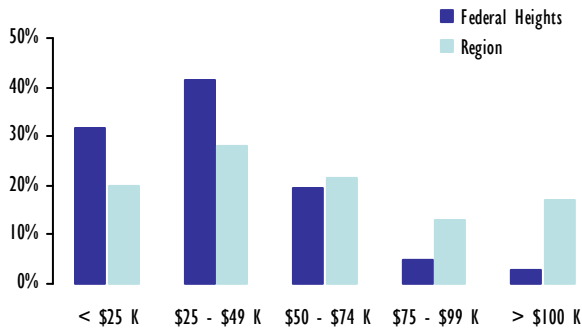
Federal Heights Community Profile

Snapshot from the 2000 Census

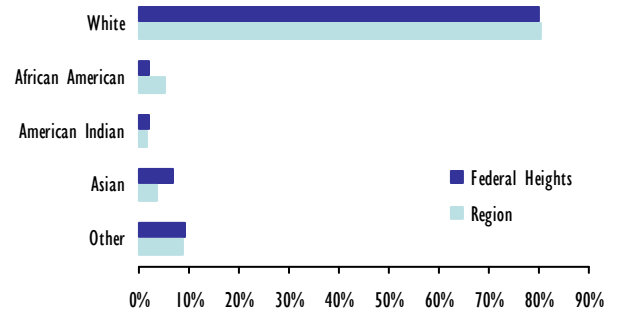
	Federal Heights	Erie	Northglenn	Region
Median Age	31	32	33	34
Percent Over Age 65	12%	3%	10%	9%
Median Household Income in 1999	\$33,750	\$77,114	\$48,276	\$52,328
Poverty Rate	9%	2%	4%	6%
Home Ownership Rate	59%	90%	68%	66%
Percent Hispanic	23%	8%	20%	18%
Percent of the Population over 25 with Bachelor's Degree or Higher	9%	49%	19%	36%
Disability Rate	24%	10%	16%	16%



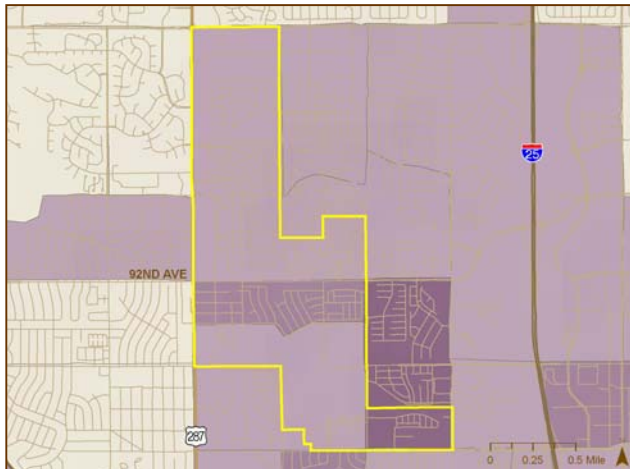
Household Income in 1999



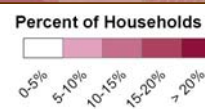
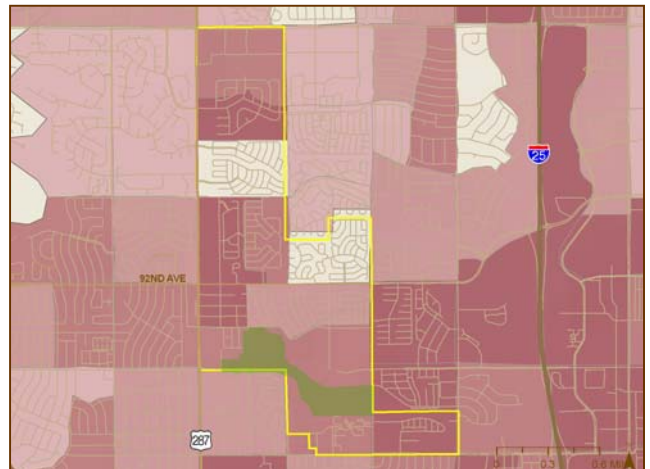
Race of Residents



Households Below the Poverty Line (By Census Tract)



Non-White and Hispanic Households (By Census Block)

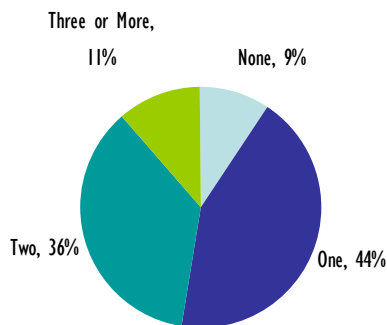


Federal Heights Community Profile

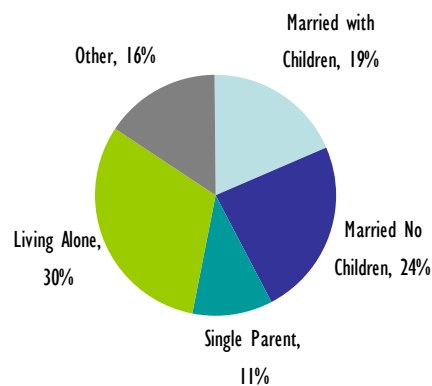
Snapshot from the 2000 Census (Continued)

Language Spoken at Home	Federal Heights	Erie	Northglenn	Region
English Only	81%	89%	85%	83%
Other than English	19%	11%	15%	17%
• Speak English Less Than Very Well	9%	4%	7%	8%

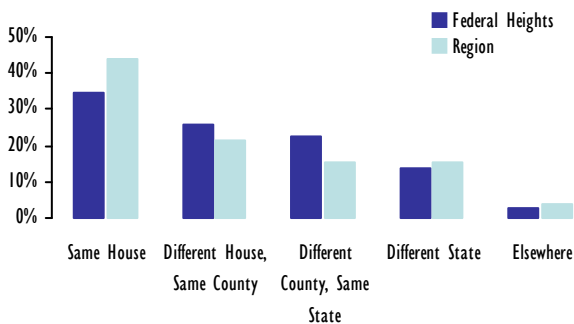
Vehicles Available per Household



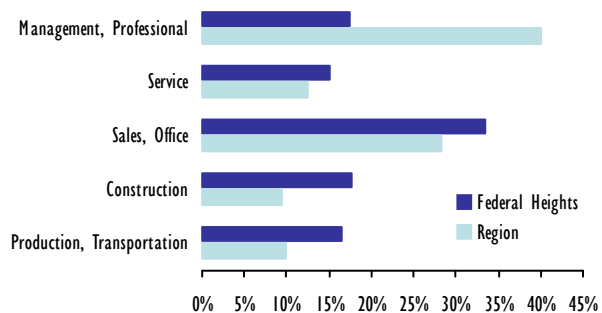
Household Type



Residential Location: 1995 vs. 2000



Occupations of People Living in Federal Heights



Top 10 Commuting Destinations of Workers Who Live in Federal Heights
(Percent of Workers)

1. Denver (26%)
2. Westminster (9%)
3. Unincorporated Adams County (8%)
4. Thornton (7%)
5. Federal Heights (6%)
6. Broomfield (4%)
7. Commerce City (4%)
8. Arvada (4%)
9. Aurora (4%)
10. Boulder (3%)

Top 10 Residential Locations of Workers Who Commute to Federal Heights
(Percent of Workers)

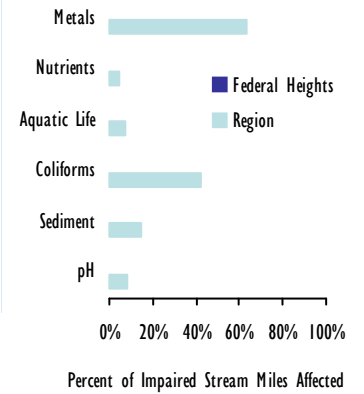
1. Federal Heights (16%)
2. Thornton (15%)
3. Unincorporated Adams County (14%)
4. Westminster (12%)
5. Denver (6%)
6. Arvada (5%)
7. Northglenn (5%)
8. Out of Region (4%)
9. Broomfield (3%)
10. Commerce City (3%)

Federal Heights Community Profile

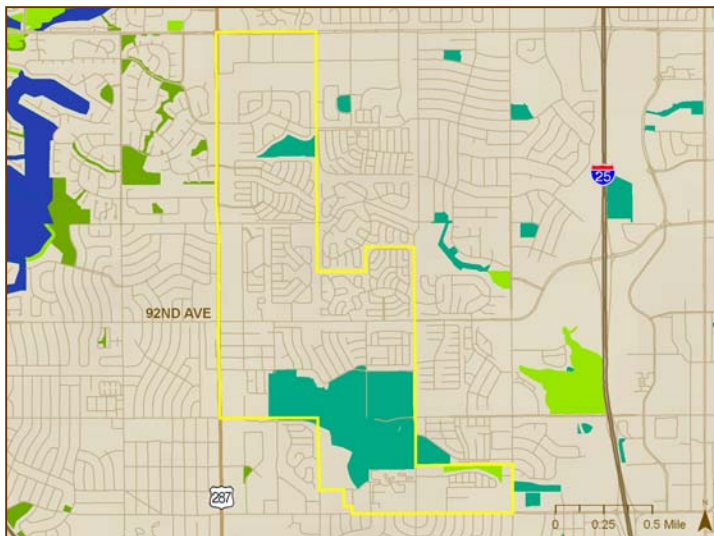
Environment

	Federal Heights	Erie	Northglenn	Region
Parks and Open Space (Square Miles)	0.3	0.6	0.6	1,523.30
Streams (Miles)	0.4	10	3.2	4,735.00
Impaired Stream Segments (Miles)	0	7	0	425
Percent of Streams Impaired	0%	65%	0%	9%

Identified Potential Pollutants of Impaired Streams



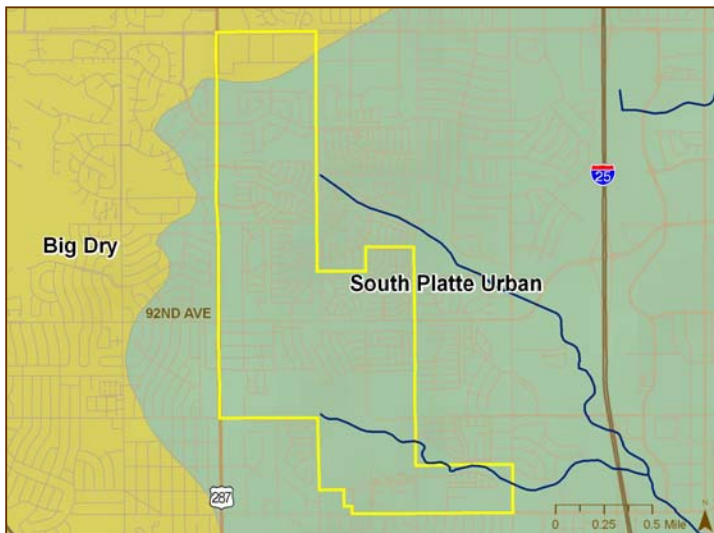
Parks and Open Space



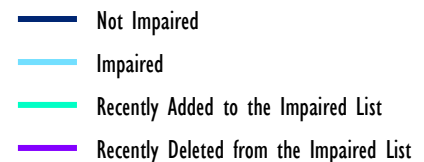
Parks and Open Space Classifications



Watersheds and Streams



Stream Status



A product of the
Denver Regional Council of Governments

Last updated: April, 2010

For more information,
contact Jill Locantore
303-480-6752
jlocantore@drcog.org

