



Denver Regional Council of Governments

A voluntary association of 52 county and municipal governments dedicated to making the nine-county Denver region a great place to live, work and play.

Board Chair: Rod Bockenfeld
Executive Director: Jennifer Schaufele

1290 Broadway
Suite 700
Denver, CO 80203
303.455.1000
www.drcog.org

INSIDE THIS PROFILE

Current Estimates 1

Trends Over Time 2

Land Use 3

Transportation 4

Census Data 6

Environment 8

Throughout this profile, Thornton is compared to the DRCOG region, which includes Adams, Arapahoe, Boulder, Broomfield, Clear Creek, Denver, Douglas, Gilpin and Jefferson counties. Thornton is also compared to other communities within the DRCOG region that are similar in size or geographic location.

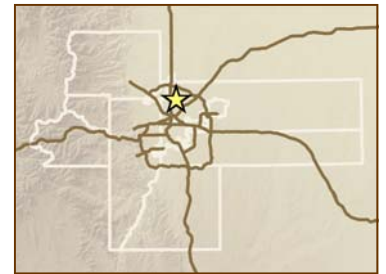
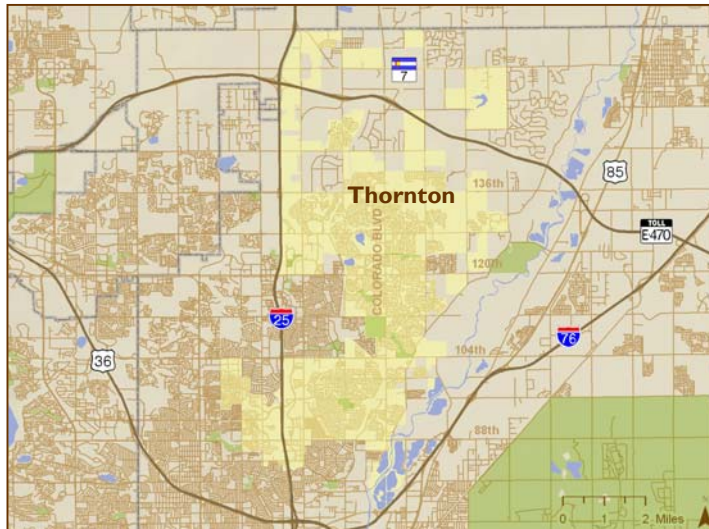
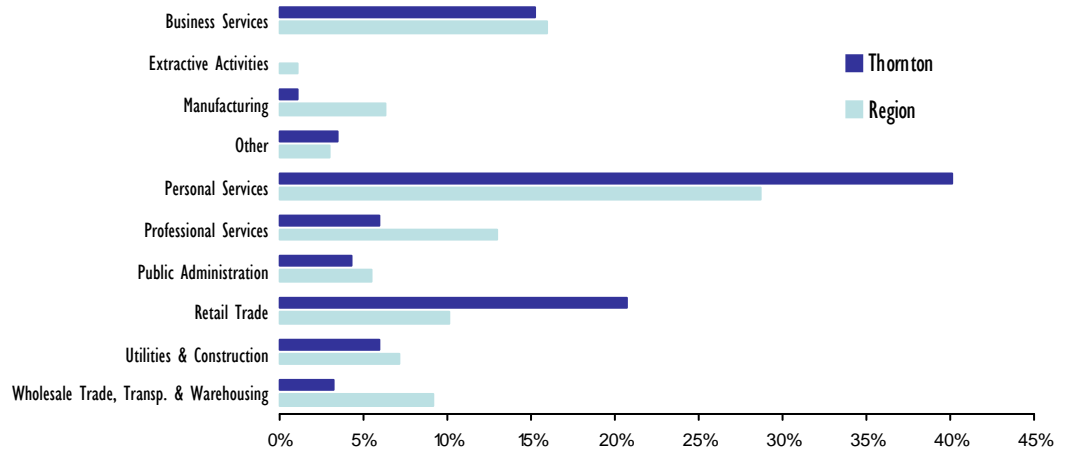
Thornton Community Profile

Current Estimates (2008)

	Thornton	Centennial	Northglenn	Region
Population	115,619	101,539	36,457	2,863,806
Employment	24,020	52,282	8,381	1,427,907
Employers	1,762	4,222	705	101,202
Average Annual Wage*	\$28,441	\$53,572	\$28,268	\$45,512
Average Household Size	2.83	2.8	2.71	2.58
Percent Multifamily Housing Units	24%	11%	27%	28%
New Housing Units Built 2005-2006	740	123	0	25,003
Vacancy Rate	4.10%	5.20%	5.80%	5.00%

* Workers employed in the community

Employment By Industry



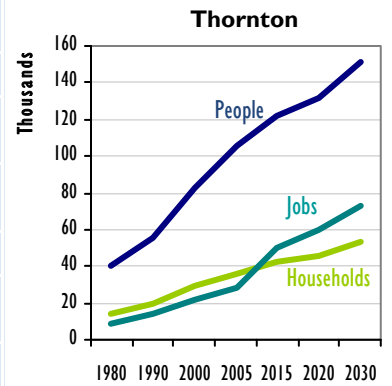
DRCOG Board Representative:
Val Vigil

Community Website:
www.cityofthornton.net

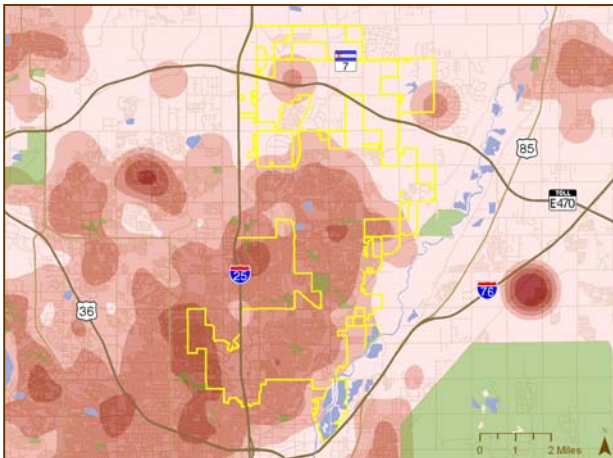
Thornton Community Profile

Trends Over Time

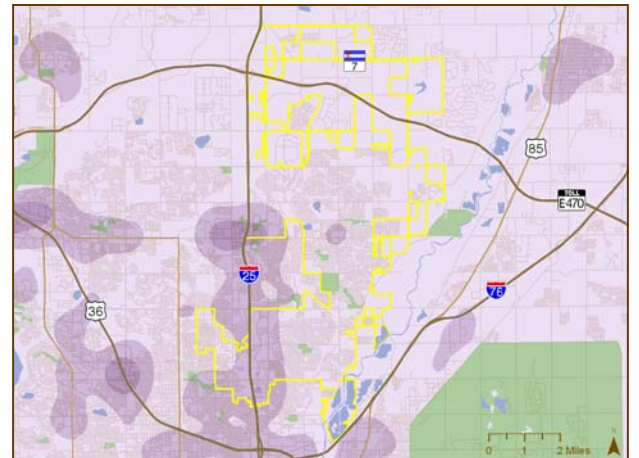
	Thornton	Centennial	Northglenn	Region
2030 Population	151,504	122,391	40,987	3,875,200
Population Growth 1980-2005	172%		24%	67%
Population Growth 2005-2030	38%	19%	11%	43%
2030 Employment	73,066	78,551	14,634	2,364,800
Employment Growth 1980-2005	248%		81%	71%
Employment Growth 2005-2030	156%	28%	28%	49%



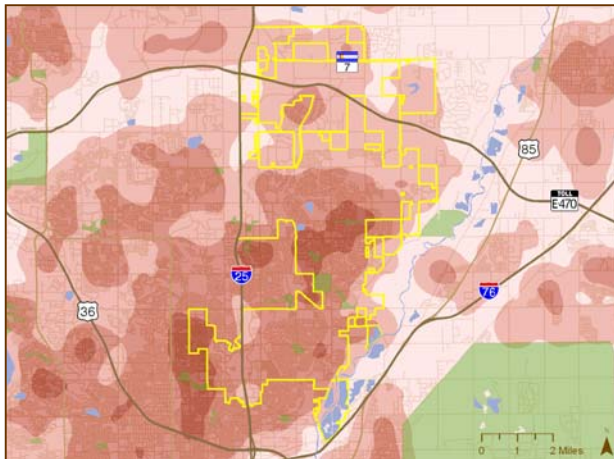
2005 Household Density



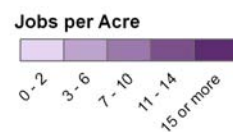
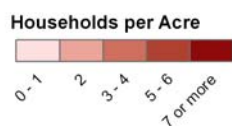
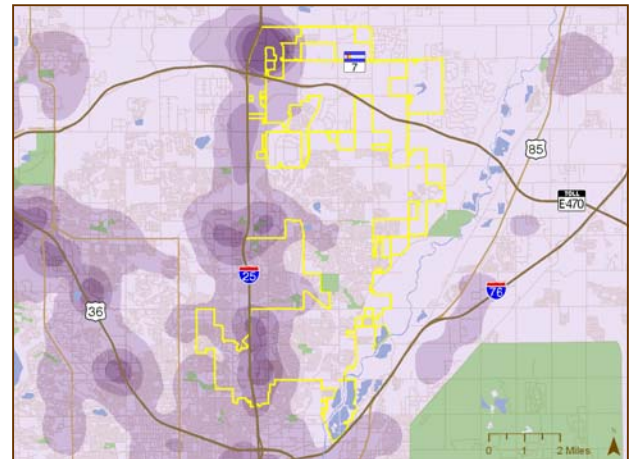
2005 Employment Density



2030 Household Density



2030 Employment Density

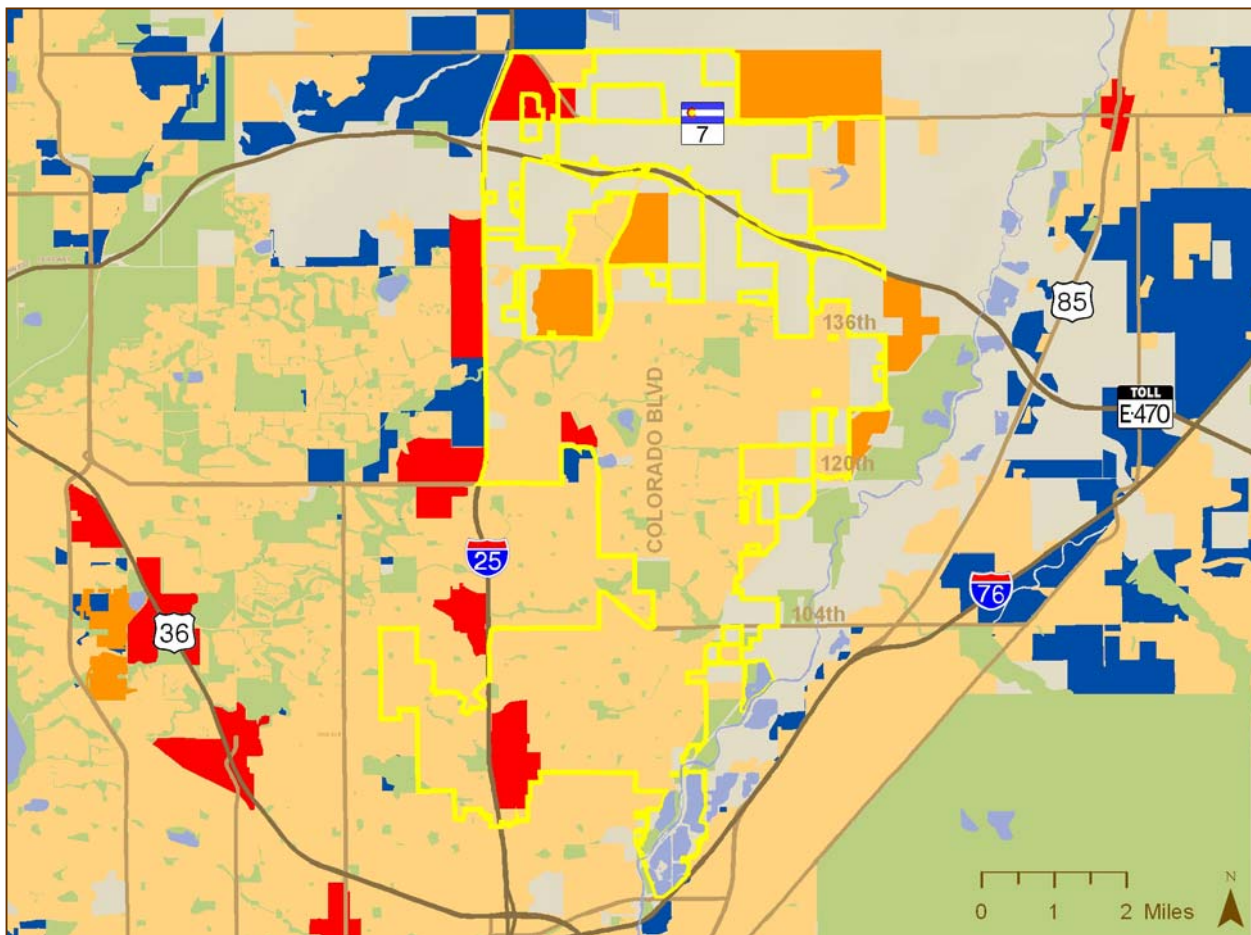


Thornton Community Profile

Current and Future Land Use

	Thornton	Centennial	Northglenn	Region
Total Land Area (Square Miles)	32.8	28.2	7.4	5,108.30
2030 Urban Growth/Boundary Area (Square Miles)	32.2	21.9	6.1	776.2
Percent Urbanized in 2006	73%	83%	80%	14%
Annual Percent Increase in Urbanized Area 2006-2030	2.00%	0.10%	0.00%	1.00%

Metro Vision 2030 Land Use Elements



- Existing Urbanized Area
- Semi-Urban Development
- 2030 Urban Growth Boundary*
- Urban Centers
- Open Space

What is Metro Vision 2030?

Metro Vision 2030 is a long-range plan to manage growth within the Denver area. It addresses development, transportation needs and ways to preserve environmental quality. Bringing communities together for regional cooperation is the plan's most important goal. The map above shows Metro Vision elements relevant to land use. Metro Vision does not address development activity occurring on specific parcels of land; that is the responsibility of local jurisdictions.

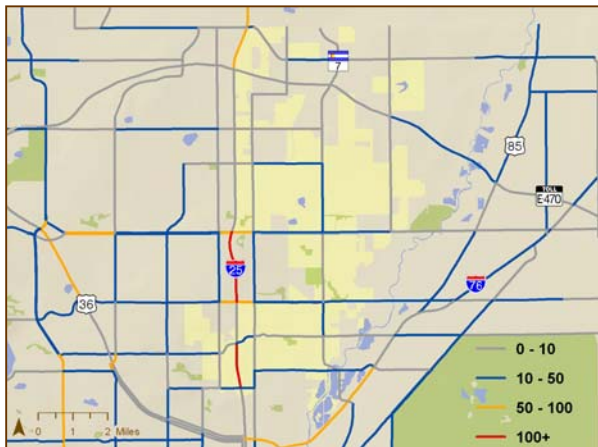
*Map does not show UGB for Urban Growth Area Communities: Aurora, Castle Rock, Longmont, Thornton and Adams County

Thornton Community Profile

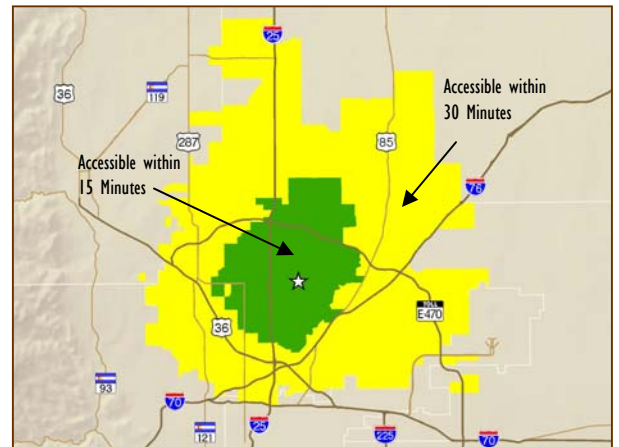
Existing Transportation System

2005 Data (Unless Noted)	Thornton	Centennial	Northglenn	Region
Vehicle Miles Traveled (VMT) per Day	1,675,433	1,762,166	623,553	66,308,086
Roadways With 3+ Hours of Severe Congestion (Lane Miles)	44	62	20	1,418
Injury and Fatality Crashes (2004)	467	481	185	18,454
Transit Share of Work Trips	3%	2%	4%	4%
Share of Population with Good Access to Jobs By Transit	4%	43%	0%	34%

Average Daily Traffic (Thousands)



Driving Times (AM Peak Period)

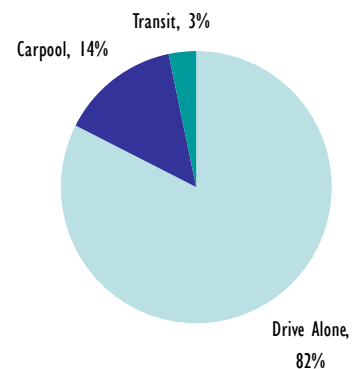


Transit and Bicycle Facilities



- | Transit Facilities | Bicycle Facilities |
|--------------------|--------------------|
| Station | On Road |
| park-n-Ride | Off Road |
| Rapid Transit | Neighborhood |

Means of Transportation to Work

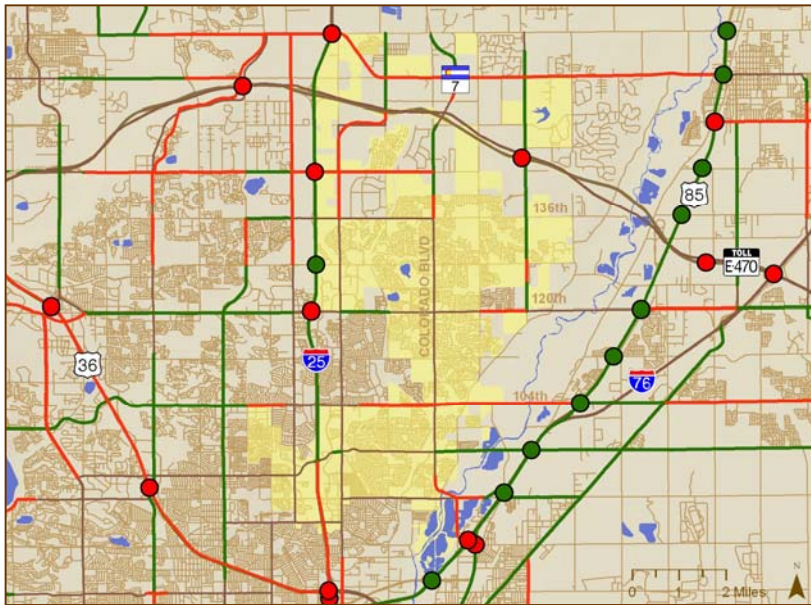
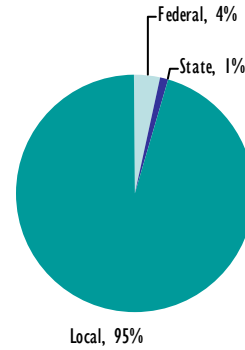


Thornton Community Profile

2030 Transportation Plans

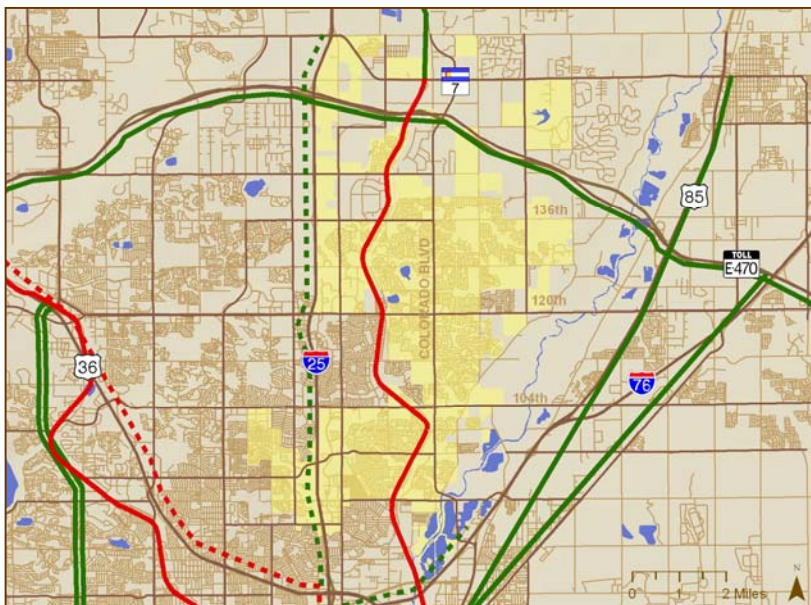
Major Improvements Planned for Thornton (2007-2012 Transportation Improvement Program)	Cost (Thousands)	Completion Date
North Metro: Denver Union Station to 160th Avenue	\$509,201	2015
Colorado Boulevard: I-76 and US-6 Extension Study	\$3,980	2017
SH-44: Colorado to US-85 Widening	\$3,287	
160th Avenue: Bull Canal	\$1,860	2009
Thornton Pkwy: Washington St Intersection Improvements	\$1,750	2009

Revenue Sources for Transportation Improvements in Thornton



Roadway Improvements

- Roadway (Funded)
- Roadway (Unfunded)
- Interchange (Funded)
- Interchange (Unfunded)



Transit and High Occupancy Vehicle (HOV) Improvements

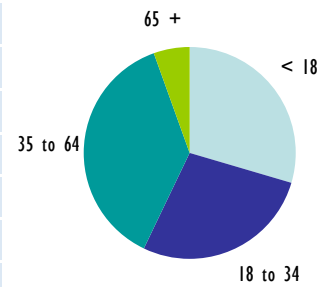
- Rapid Transit (Funded)
- Rapid Transit (Unfunded)
- - - High Occupancy Vehicle/Bus Rapid Transit (Funded)
- - - High Occupancy Vehicle/Bus Rapid Transit (Unfunded)

Thornton Community Profile

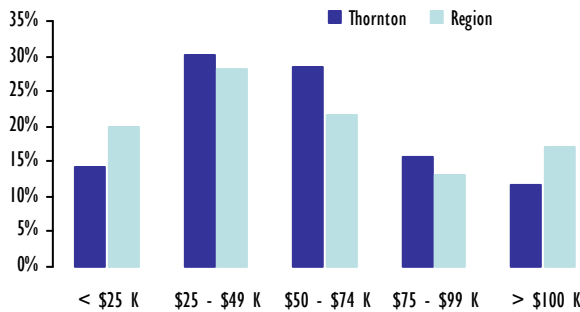
Snapshot from the 2000 Census

	Thornton	Centennial	Northglenn	Region
Median Age	31	37	33	34
Percent Over Age 65	6%	8%	10%	9%
Median Household Income in 1999	\$54,445	\$76,824	\$48,276	\$52,328
Poverty Rate	4%	2%	4%	6%
Home Ownership Rate	78%	88%	68%	66%
Percent Hispanic	21%	5%	20%	18%
Percent of the Population over 25 with Bachelor's Degree or Higher	20%	53%	19%	36%
Disability Rate	16%	9%	16%	16%

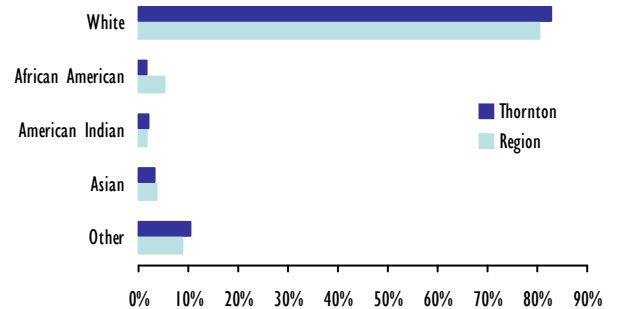
Age of Residents



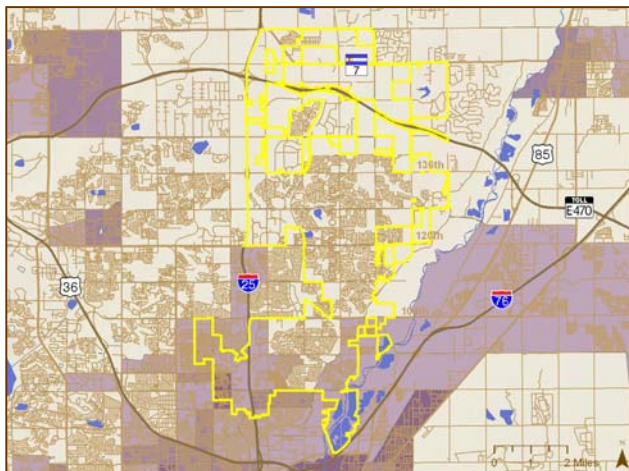
Household Income in 1999



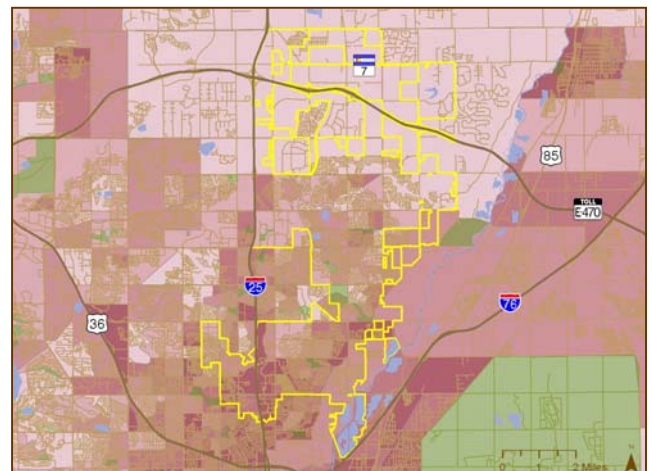
Race of Residents



Households Below the Poverty Line
(By Census Tract)



Non-White and Hispanic Households
(By Census Block)

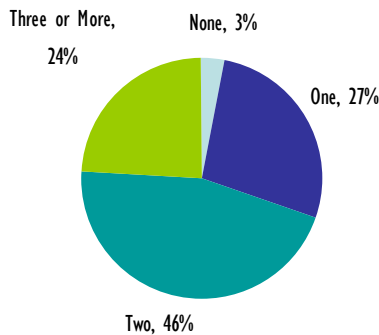


Thornton Community Profile

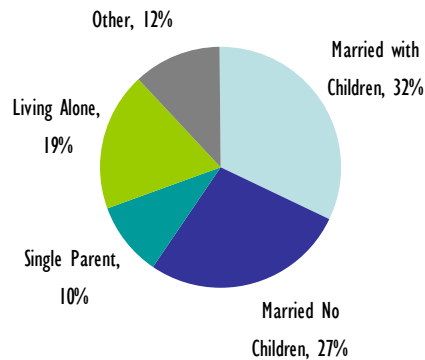
Snapshot from the 2000 Census (Continued)

Language Spoken at Home	Thornton	Centennial	Northglenn	Region
English Only	87%	91%	85%	83%
Other than English	14%	9%	15%	17%
• Speak English Less Than Very Well	6%	3%	7%	8%

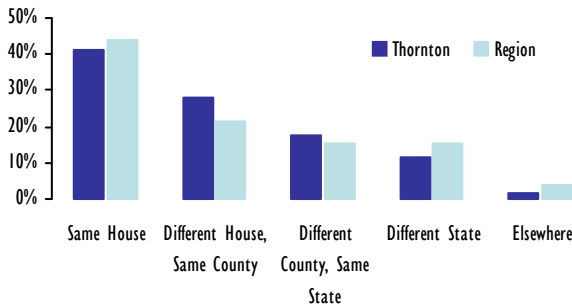
Vehicles Available per Household



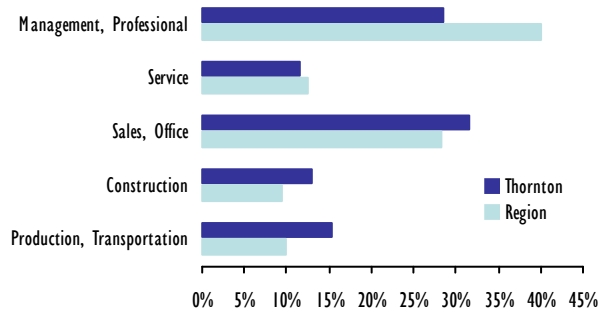
Household Type



Residential Location: 1995 vs. 2000



Occupations of People Living in Thornton



Top 10 Commuting Destinations of Workers Who Live in Thornton
(Percent of Workers)

1. Denver (28%)
2. Thornton (15%)
3. Unincorporated Adams County (8%)
4. Westminster (7%)
5. Northglenn (6%)
6. Commerce City (4%)
7. Broomfield (4%)
8. Boulder (3%)
9. Aurora (3%)
10. Out of Region (2%)

Top 10 Residential Locations of Workers Who Commute to Thornton
(Percent of Workers)

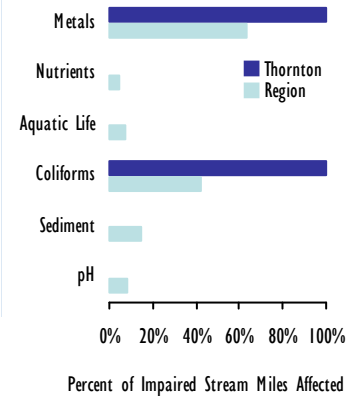
1. Thornton (30%)
2. Unincorporated Adams County (12%)
3. Westminster (9%)
4. Denver (8%)
5. Northglenn (8%)
6. Arvada (4%)
7. Aurora (4%)
8. Out of Region (4%)
9. Broomfield (3%)
10. Unincorporated Jefferson County (2%)

Thornton Community Profile

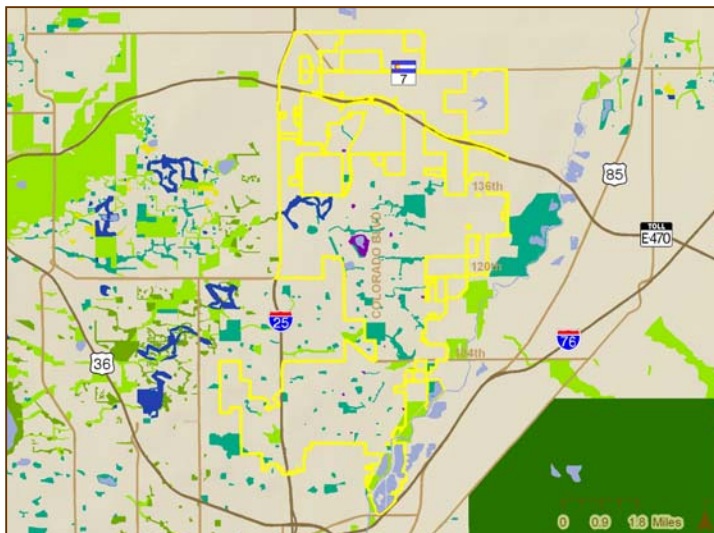
Environment

	Thornton	Centennial	Northglenn	Region
Parks and Open Space (Square Miles)	2.4	1.8	0.6	1,523.30
Streams (Miles)	28.1	38.1	3.2	4,735.00
Impaired Stream Segments (Miles)	4	1	0	425
Percent of Streams Impaired	16%	3%	0%	9%

Identified Potential Pollutants of Impaired Streams



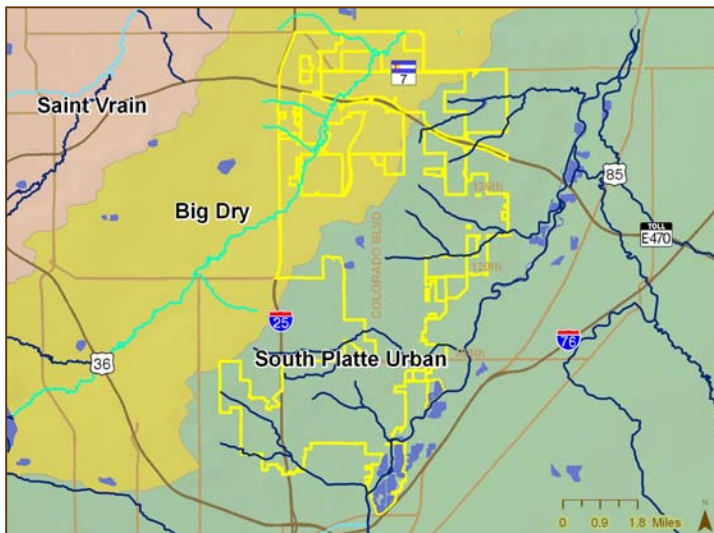
Parks and Open Space



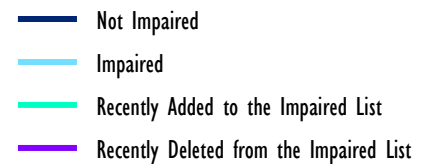
Parks and Open Space Classifications



Watersheds and Streams



Stream Status



A product of the
Denver Regional Council of Governments

Last updated: April, 2010

For more information,
contact Jill Locantore
303-480-6752
jlocantore@drcog.org

