



Denver Regional Council of Governments

A voluntary association of 56 county and municipal governments dedicated to making the nine-county Denver region a great place to live, work and play.

Board Chair: Rod Bockenfeld
Executive Director: Jennifer Schaufele

1290 Broadway
Suite 700
Denver, CO 80203
303.455.1000
www.drcog.org

INSIDE THIS PROFILE

- Current Estimates** 1
- Trends Over Time** 2
- Land Use** 3
- Transportation** 4
- Census Data** 6
- Environment** 8

Throughout this profile, Boulder County is compared to the DRCOG region, which includes Adams, Arapahoe, Boulder, Broomfield, Clear Creek, Denver, Douglas, Gilpin and Jefferson counties. Boulder County is also compared to other communities within the DRCOG region that are similar in size or geographic location.

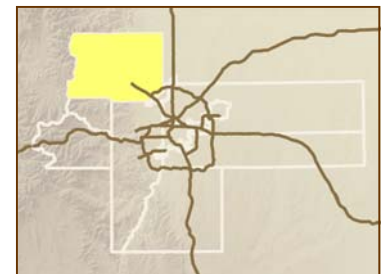
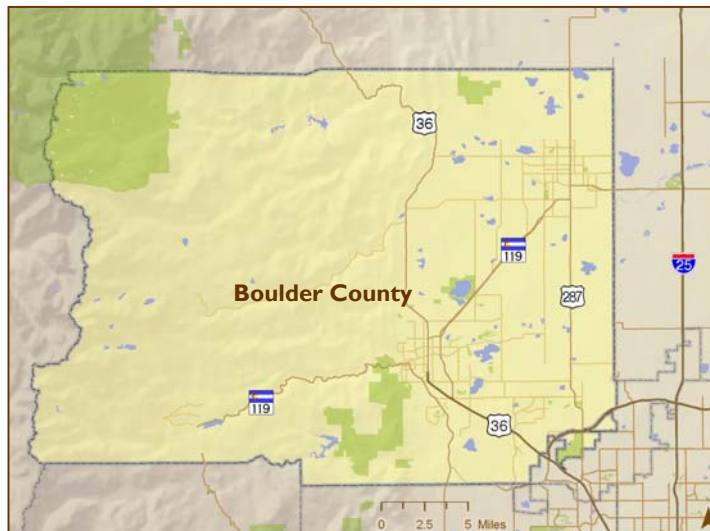
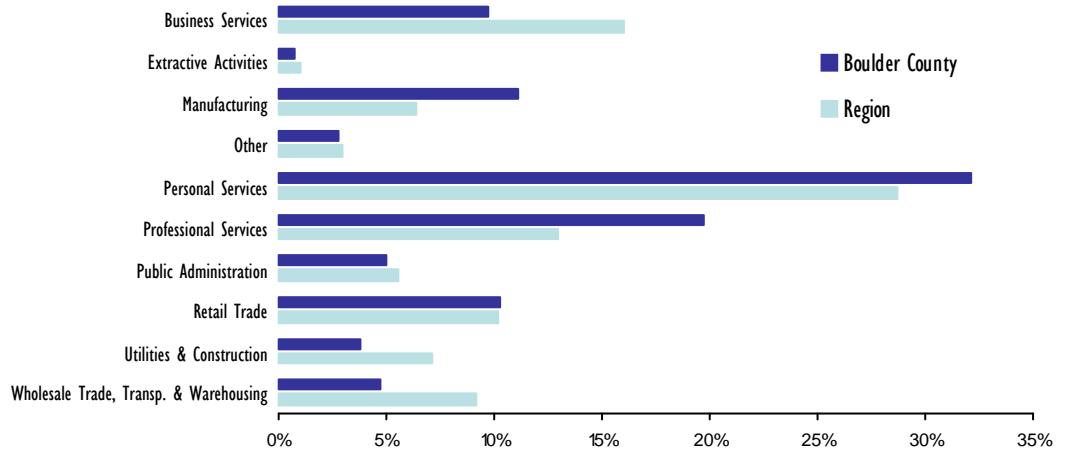
Boulder County Community Profile

Current Estimates (2008)

	Boulder County	Aurora	Jefferson County	Region
Population	298,685	321,949	543,053	2,863,806
Employment	161,874	106,928	216,974	1,427,907
Employers	13,127	6,474	19,001	101,202
Average Annual Wage*	\$47,351	\$34,508	\$41,737	\$45,512
Average Household Size	2.46	2.59	2.53	2.58
Percent Multifamily Housing Units	30%	36%	25%	28%
New Housing Units Built 2007-2008	898	1,733	1,662	25,003
Vacancy Rate	7.10%	4.50%	8.30%	5.00%

* Workers employed in the community

Employment By Industry



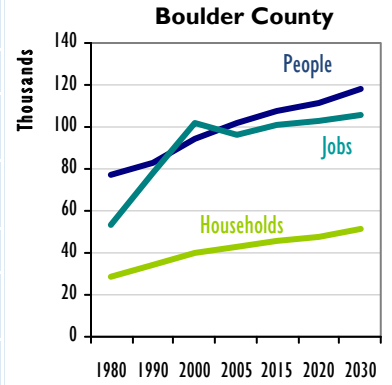
DRCOG Board Representative:
Will Toor

Community Website:
www.co.boulder.co.us

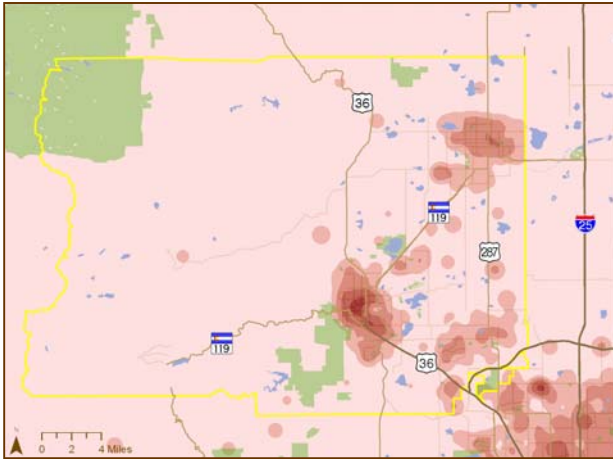
Boulder County Community Profile

Trends Over Time

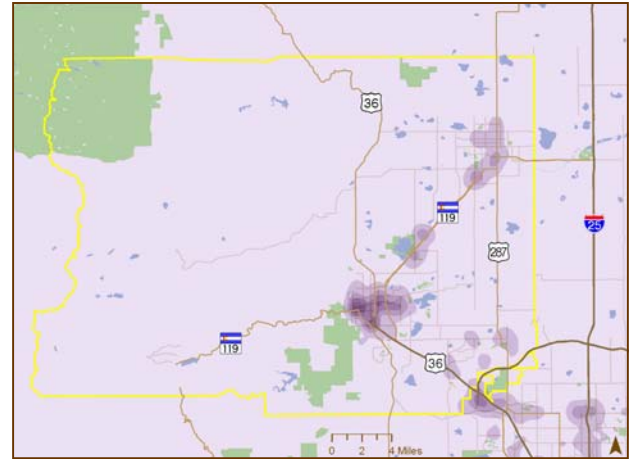
	Boulder County	Aurora	Jefferson County	Region
2030 Population	378,006	507,144	675,178	3,875,200
Population Growth 1980-2005	57%	94%	45%	67%
Population Growth 2005-2030	27%	65%	25%	43%
2030 Employment	215,858	268,049	349,923	2,364,800
Employment Growth 1980-2005	123%	136%	74%	71%
Employment Growth 2005-2030	20%	131%	37%	49%



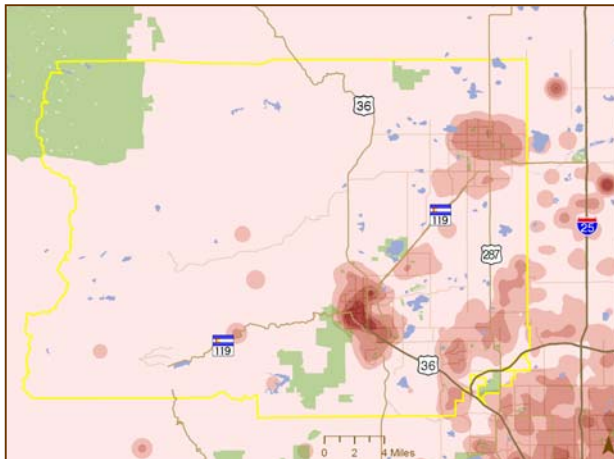
2005 Household Density



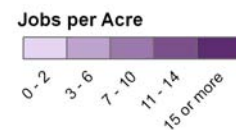
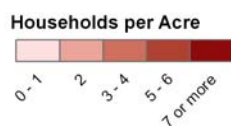
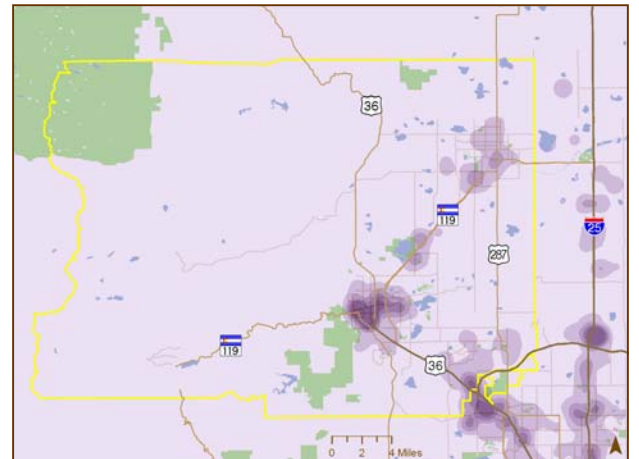
2005 Employment Density



2030 Household Density



2030 Employment Density

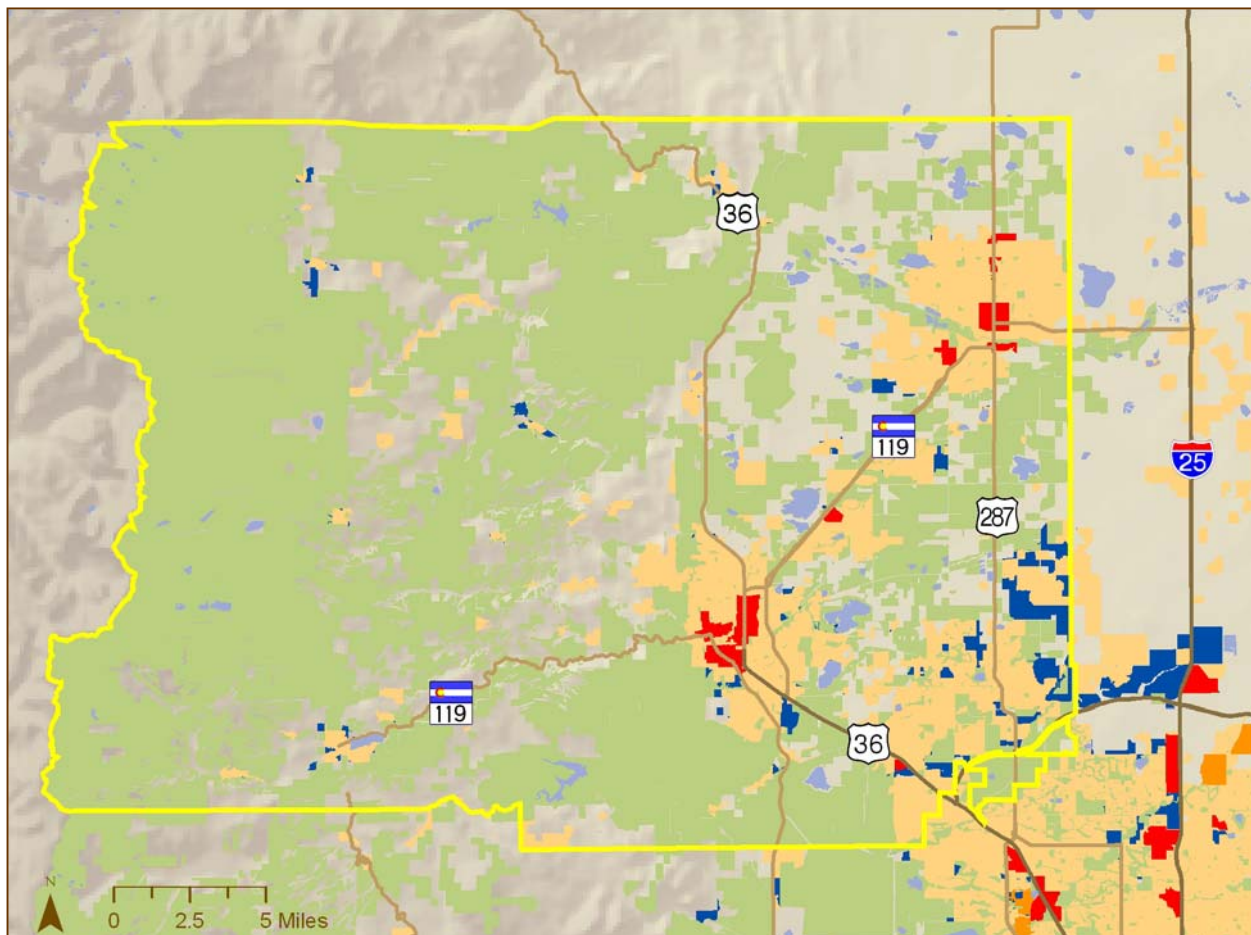


Boulder County Community Profile

Current and Future Land Use

	Boulder County	Aurora	Jefferson County	Region
Total Land Area (Square Miles)	740.7	150.2	774.1	5,108.30
2030 Urban Growth/Boundary Area (Square Miles)	84	83.9	151.5	776.2
Percent Urbanized in 2006	12%	45%	21%	14%
Annual Percent Increase in Urbanized Area 2006-2030	0.60%	1.20%	0.60%	1.00%

Metro Vision 2030 Land Use Elements



- Existing Urbanized Area
- Semi-Urban Development
- 2030 Urban Growth Boundary*
- Urban Centers
- Open Space

What is Metro Vision 2030?

Metro Vision 2030 is a long-range plan to manage growth within the Denver area. It addresses development, transportation needs and ways to preserve environmental quality. Bringing communities together for regional cooperation is the plan's most important goal. The map above shows Metro Vision elements relevant to land use. Metro Vision does not address development activity occurring on specific parcels of land; that is the responsibility of local jurisdictions.

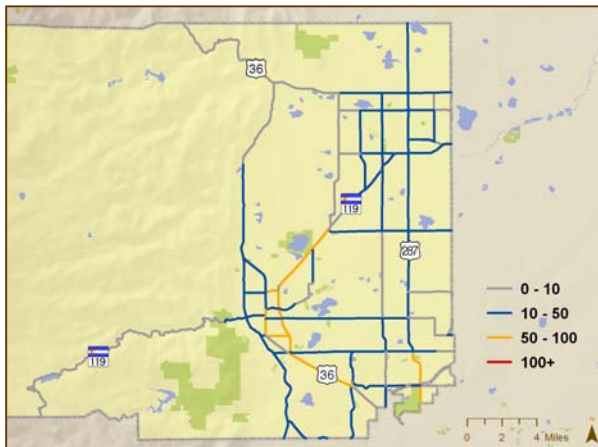
*Map does not show UGB for Urban Growth Area Communities: Aurora, Castle Rock, Longmont, Thornton and Adams County

Boulder County Community Profile

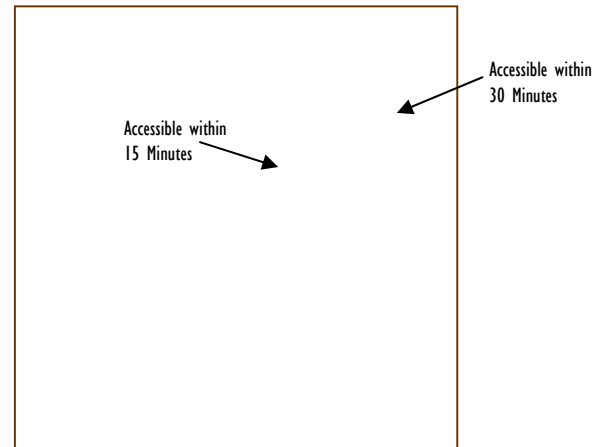
Existing Transportation System

2005 Data (Unless Noted)	Boulder County	Aurora	Jefferson County	Region
Vehicle Miles Traveled (VMT) per Day	5,751,892	5,212,209	13,416,485	66,308,086
Roadways With 3+ Hours of Severe Congestion (Lane Miles)	144	109	232	1,418
Injury and Fatality Crashes (2004)	2,058	2,114	2,873	18,454
Transit Share of Work Trips	4%	4%	4%	4%
Share of Population with Good Access to Jobs By Transit	17%	30%	22%	34%

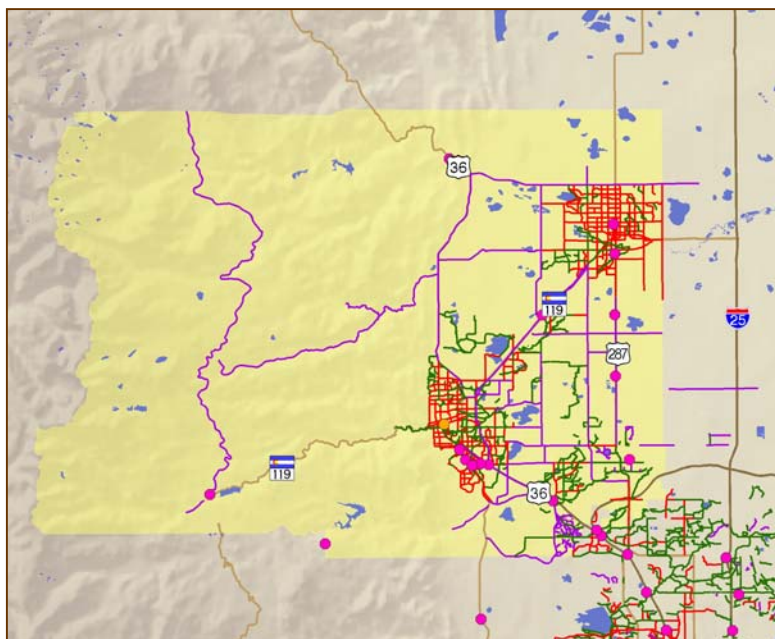
Average Daily Traffic (Thousands)



Driving Times (AM Peak Period)

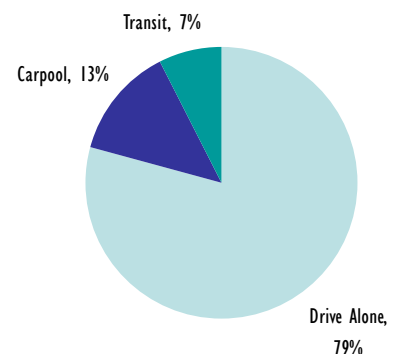


Transit and Bicycle Facilities



- | Transit Facilities | Bicycle Facilities |
|--------------------|--------------------|
| Station | On Road |
| park-n-Ride | Off Road |
| Rapid Transit | Neighborhood |

Means of Transportation to Work

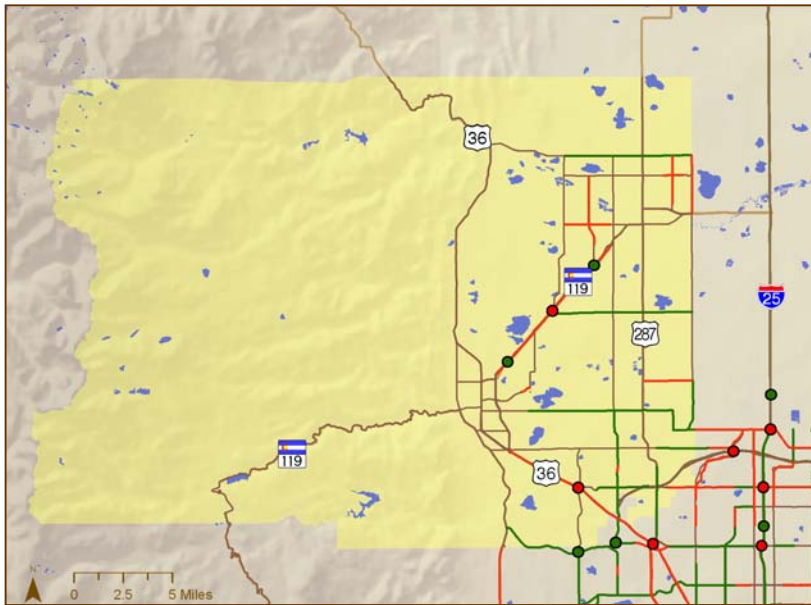
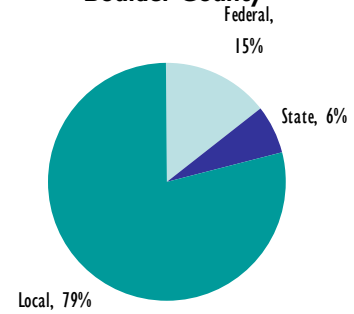


Boulder County Community Profile

2030 Transportation Plans

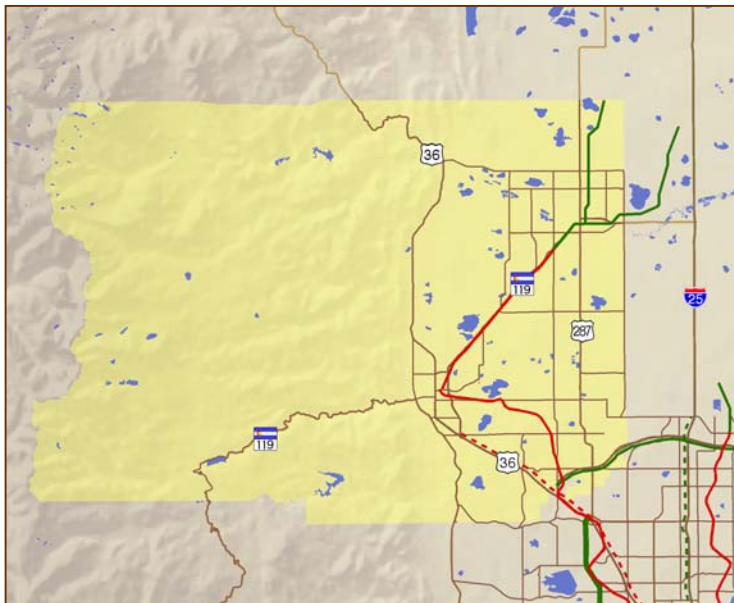
Major Improvements Planned for Boulder County (2007-2012 Transportation Improvement Program)	Cost (Thousands)	Completion Date
US 36 Rail: Denver Union Station to Longmont	\$716,627	2014
Arapahoe Rd (SH-7): Cherryvale Road to N 75th Street	\$29,700	2010
US-36: I-25 to Table Mesa Drive Improvements	\$11,627	
Pearl Street: 30th Boulder Village Transit Center	\$11,590	2008
Broadway: Pine Street to Iris Avenue	\$11,334	2008

Revenue Sources for Transportation Improvements in Boulder County



Roadway Improvements

- Roadway (Funded)
- Roadway (Unfunded)
- Interchange (Funded)
- Interchange (Unfunded)



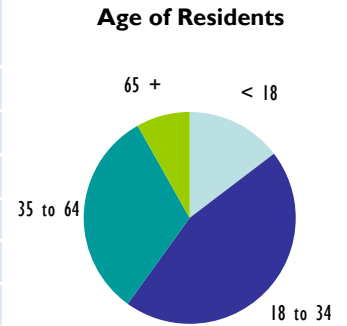
Transit and High Occupancy Vehicle (HOV) Improvements

- Rapid Transit (Funded)
- Rapid Transit (Unfunded)
- ⋯ High Occupancy Vehicle/
Bus Rapid Transit (Funded)
- ⋯ High Occupancy Vehicle/
Bus Rapid Transit (Unfunded)

Boulder County Community Profile

Snapshot from the 2000 Census

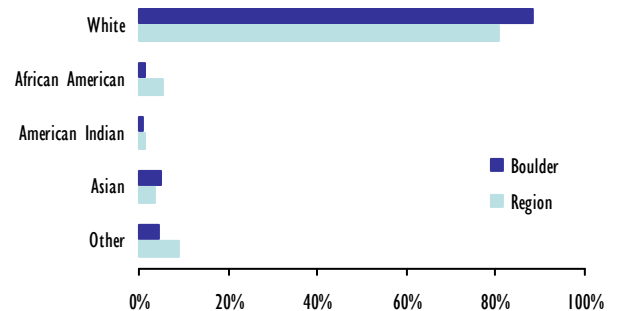
	Boulder County	Aurora	Jefferson County	Region
Median Age	33	32	37	34
Percent Over Age 65	8%	7%	10%	9%
Median Household Income in 1999	\$55,861	\$46,507	\$57,339	\$52,328
Poverty Rate	5%	7%	3%	6%
Home Ownership Rate	65%	64%	72%	66%
Percent Hispanic	10%	20%	10%	18%
Percent of the Population over 25 with Bachelor's Degree or Higher	52%	25%	37%	36%
Disability Rate	12%	18%	14%	16%



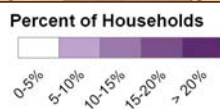
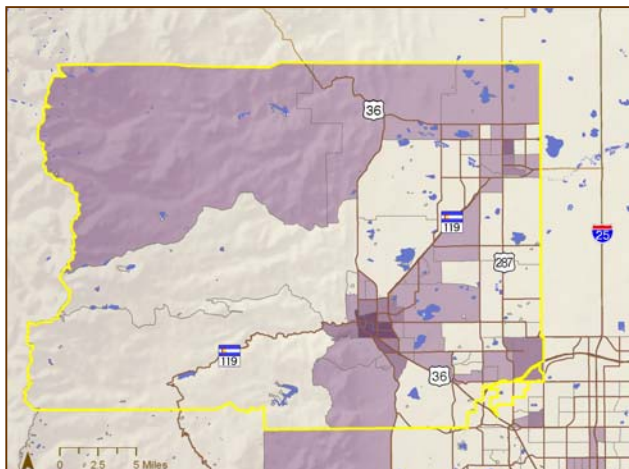
Household Income in 1999



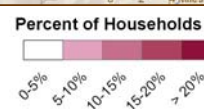
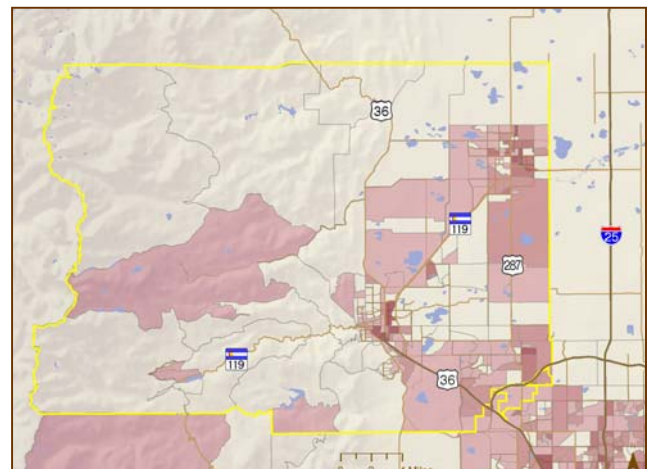
Race of Residents



**Households Below the Poverty Line
(By Census Tract)**



**Non-White and Hispanic Households
(By Census Tract)**

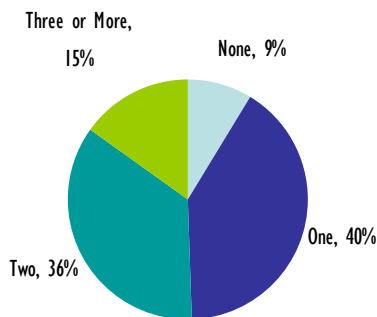


Boulder County Community Profile

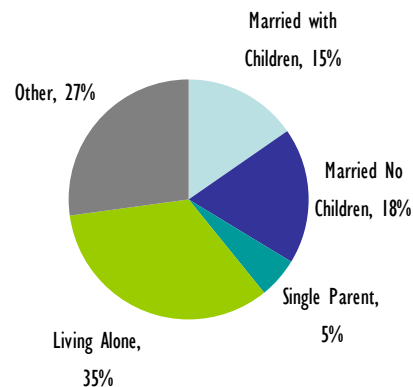
Snapshot from the 2000 Census (Continued)

Language Spoken at Home	Boulder County	Aurora	Jefferson County	Region
English Only	86%	77%	91%	83%
Other than English	14%	23%	9%	17%
• Speak English Less Than Very Well	6%	12%	3%	8%

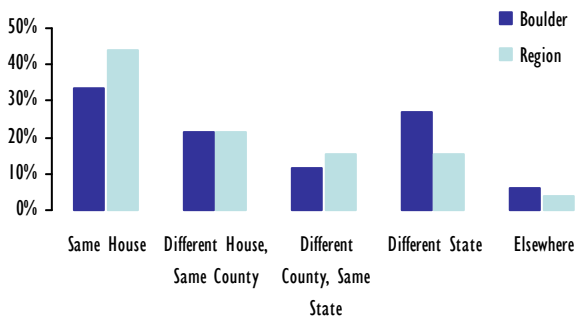
Vehicles Available per Household



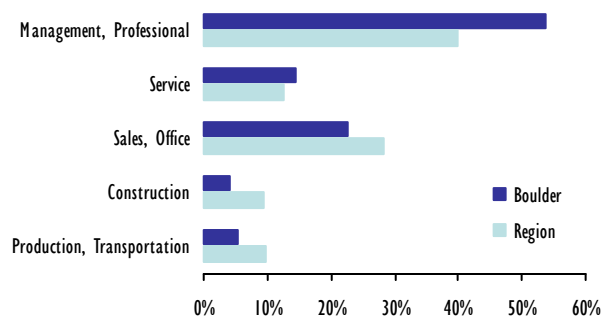
Household Type



Residential Location: 1995 vs. 2000



Occupations of People Living in Boulder County



Top 10 Commuting Destinations of Workers Who Live in Boulder County
(Percent of Workers)

1. ()
2. ()
3. ()
4. ()
5. ()
6. ()
7. ()
8. ()
9. ()
10. ()

Top 10 Residential Locations of Workers Who Commute to Boulder County
(Percent of Workers)

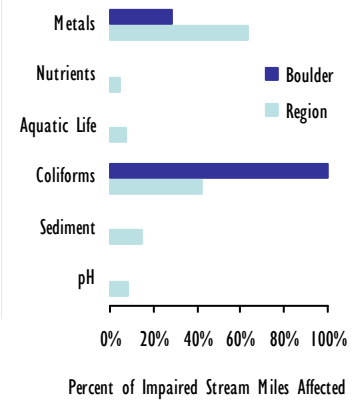
1. ()
2. ()
3. ()
4. ()
5. ()
6. ()
7. ()
8. ()
9. ()
10. ()

Boulder County Community Profile

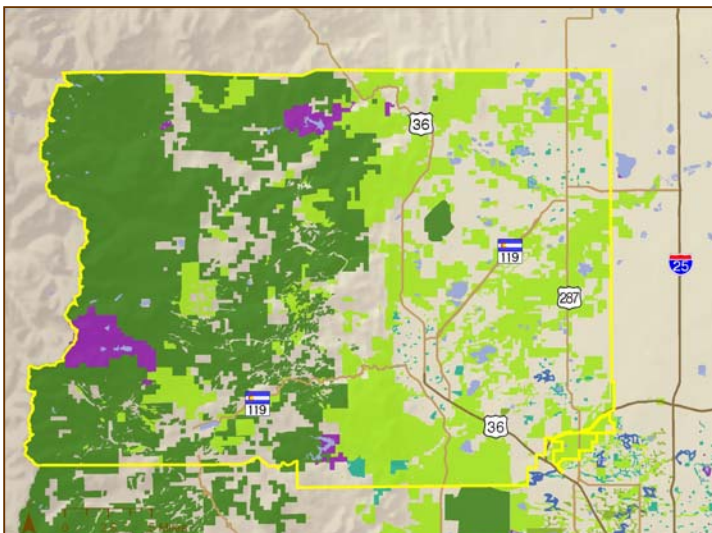
Environment

	Boulder County	Aurora	Jefferson County	Region
Parks and Open Space (Square Miles)	460	16.4	280.5	1,523.30
Streams (Miles)	607.5	127.8	665	4,735.00
Impaired Stream Segments (Miles)	90	26	62	425
Percent of Streams Impaired	15%	20%	9%	9%

Identified Potential Pollutants of Impaired Streams



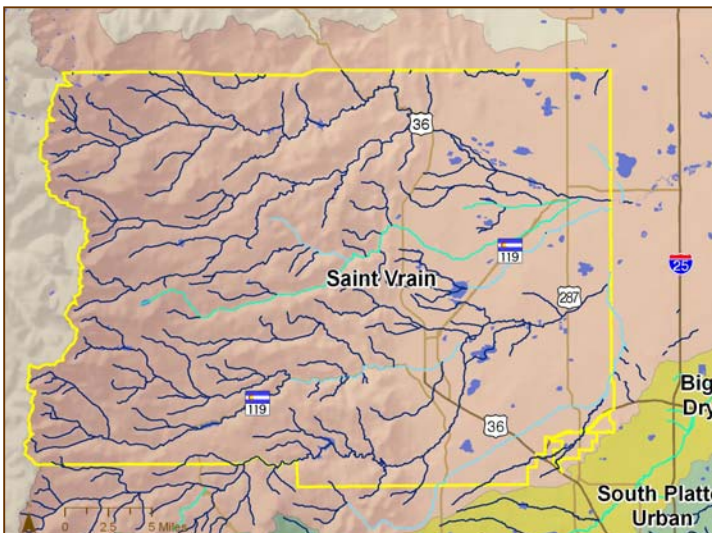
Parks and Open Space



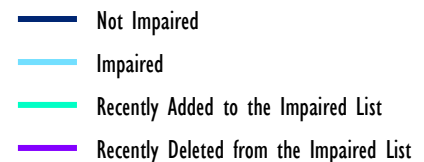
Parks and Open Space Classifications



Watersheds and Streams



Stream Status



A product of the
Denver Regional Council of Governments

Last updated: April, 2010

For more information,
contact Jill Locantore
303-480-6752
jlocantore@drcog.org

