



## Amount Of Protected Regional Open Space Preservation Focus Areas

**Goal:** Establish an integrated, linked, permanent parks and open space system that will include a variety of open space and make appropriate open space accessible to all of our region's population.

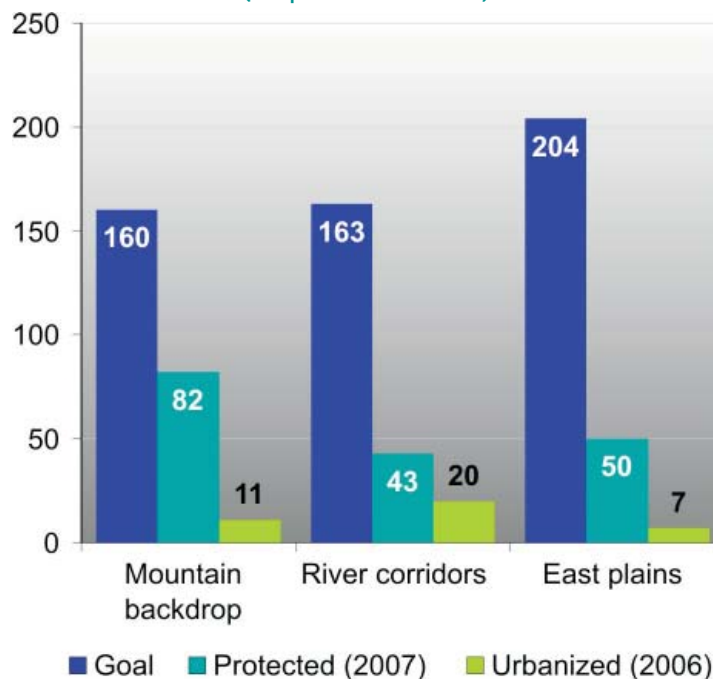
**Policy:** Preserve open space in key focus areas including canyons and river corridors, the mountain backdrop, prominent geographic and geologic features, east metro area plains preserve and open space buffers surrounding each of the four freestanding communities (see map on next page).

**Measures:** For each preservation focus area, the total area needing protection, the amount currently protected by state and local governments, and the amount of these areas already in urban development. (See page 12 for information on open space buffers surrounding the freestanding communities).

**Conclusions:** Our region is roughly halfway to reaching its 2035 goal for protecting the mountain backdrop and a third of the way toward the goal for protecting river canyons and corridors. Protection of the east plains focus area has only progressed to 25 percent of the goal area.

Because the focus areas are large, regional-scale “overlay zones” that include much land that is already developed, it won't be possible to preserve all of these lands. Preserving as much of these areas as possible is still important, however. Because the preservation focus areas increased in size and number during the most recent Metro Vision update, the current results are not directly comparable to the previous indicator report.

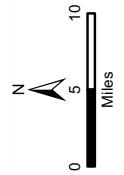
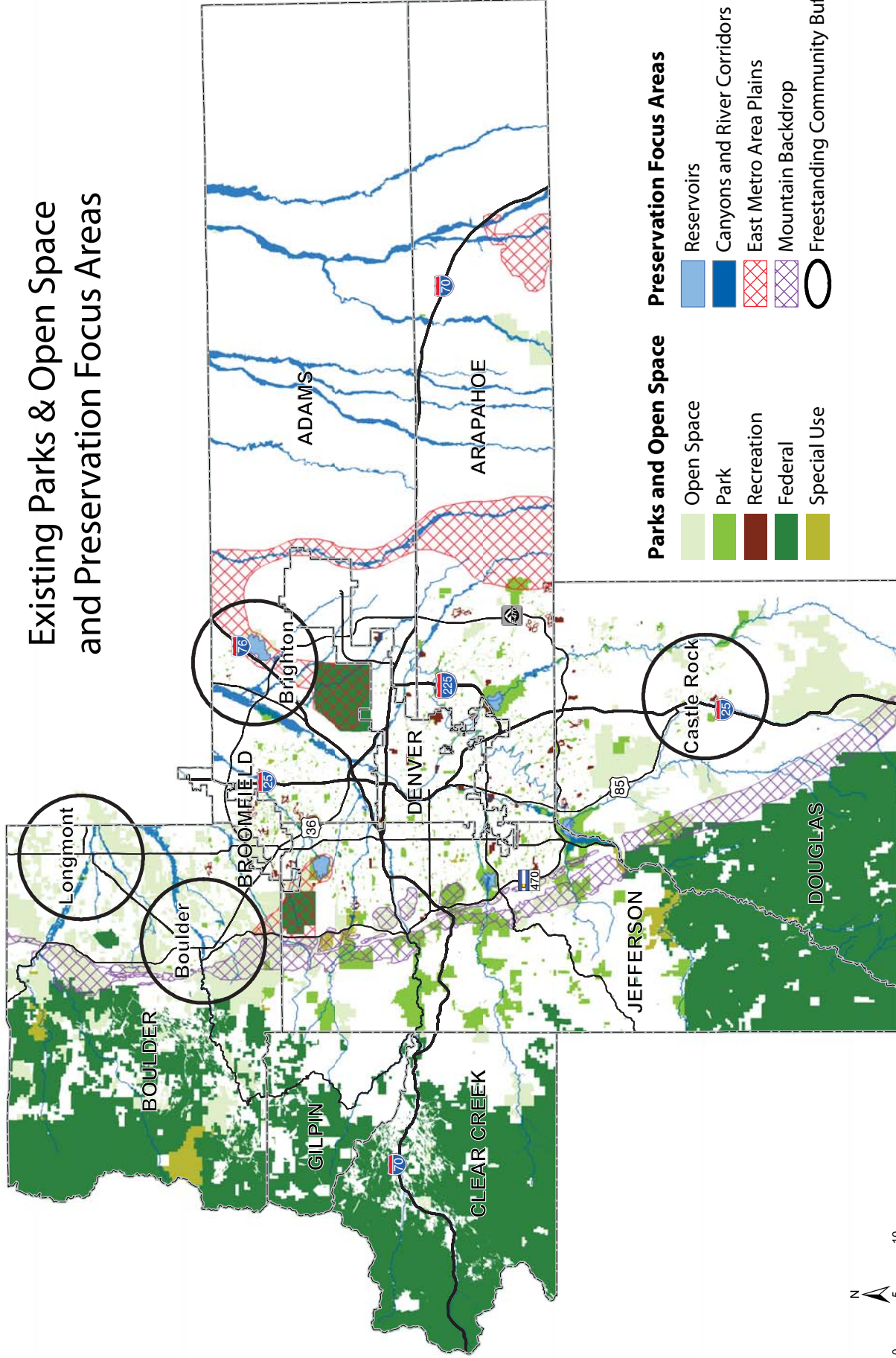
Protection of Preservation Focus Areas  
(Square Miles)



**Action Steps:** To protect open space preservation focus areas, our region can take the following actions:

- Adopt an ecosystems approach to acquisition of preservation areas and the placement of development and transportation projects.
- Implement active open space acquisition programs that promote focus areas as high-priority systems for protection.
- Refine the identification and mapping of suitable high-quality focus areas.

# Existing Parks & Open Space and Preservation Focus Areas



\*This map includes local parks and open space provided to DRCOG through December 5, 2007