



Photo Credit: Regional Transportation District

Recommended investment priorities

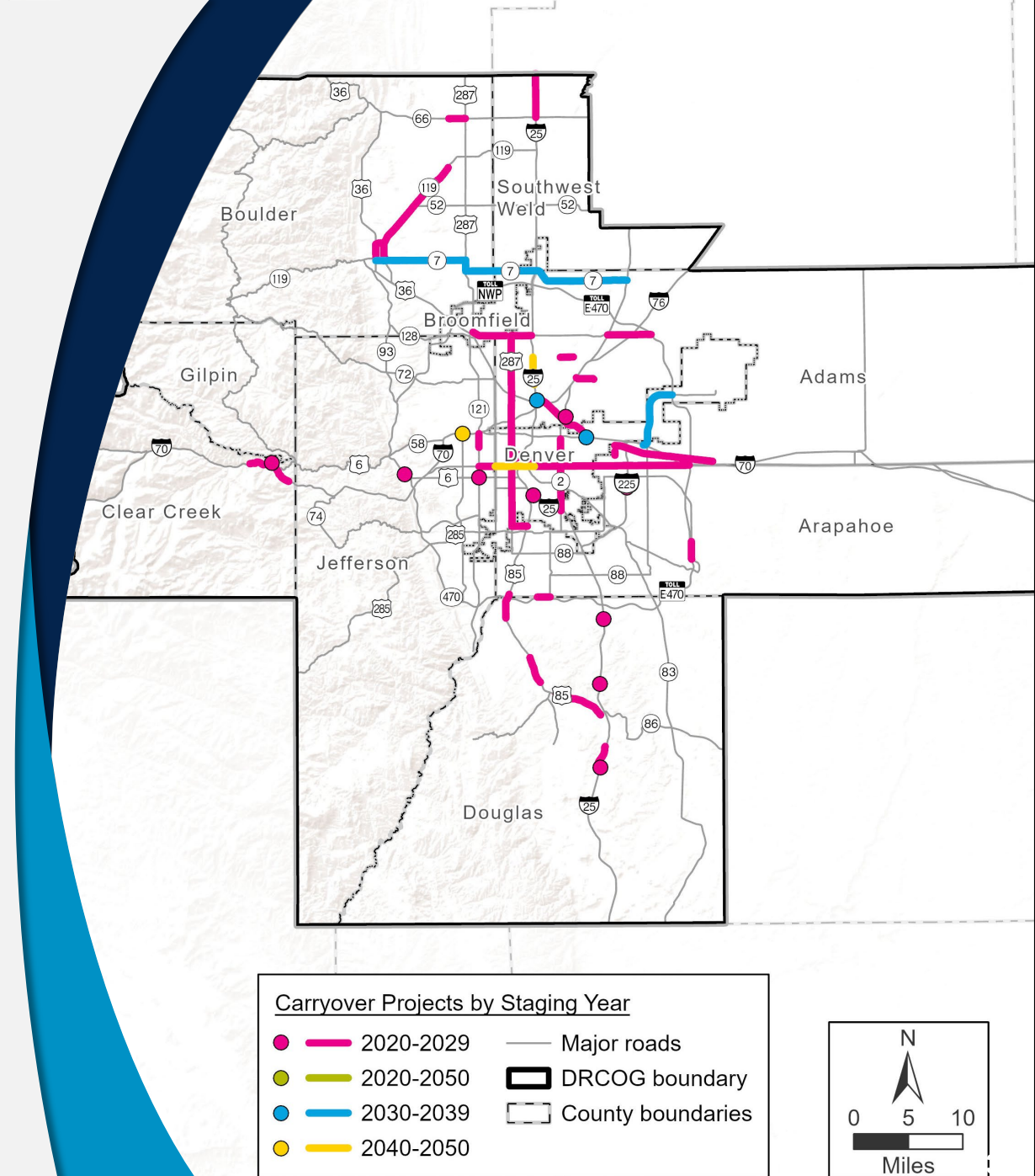
Regional Transportation Committee: December 16, 2025

Timeline

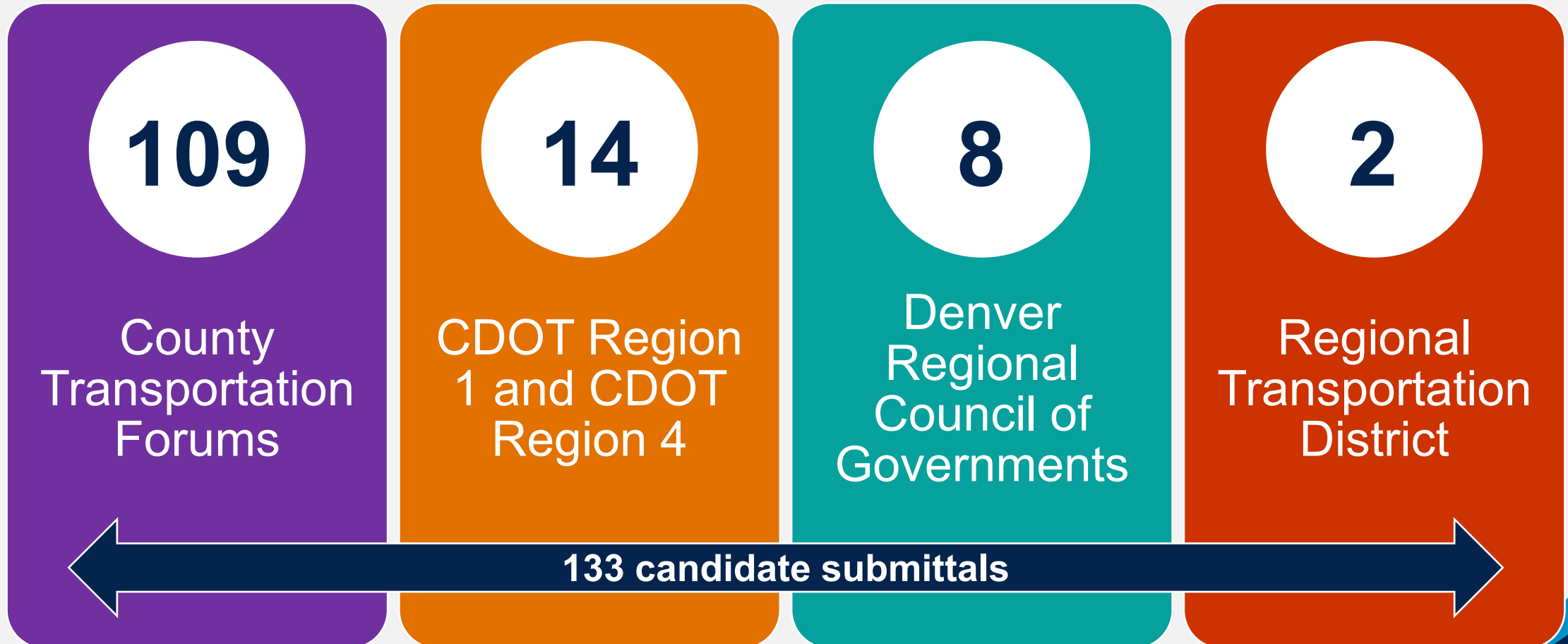


Carry-over projects

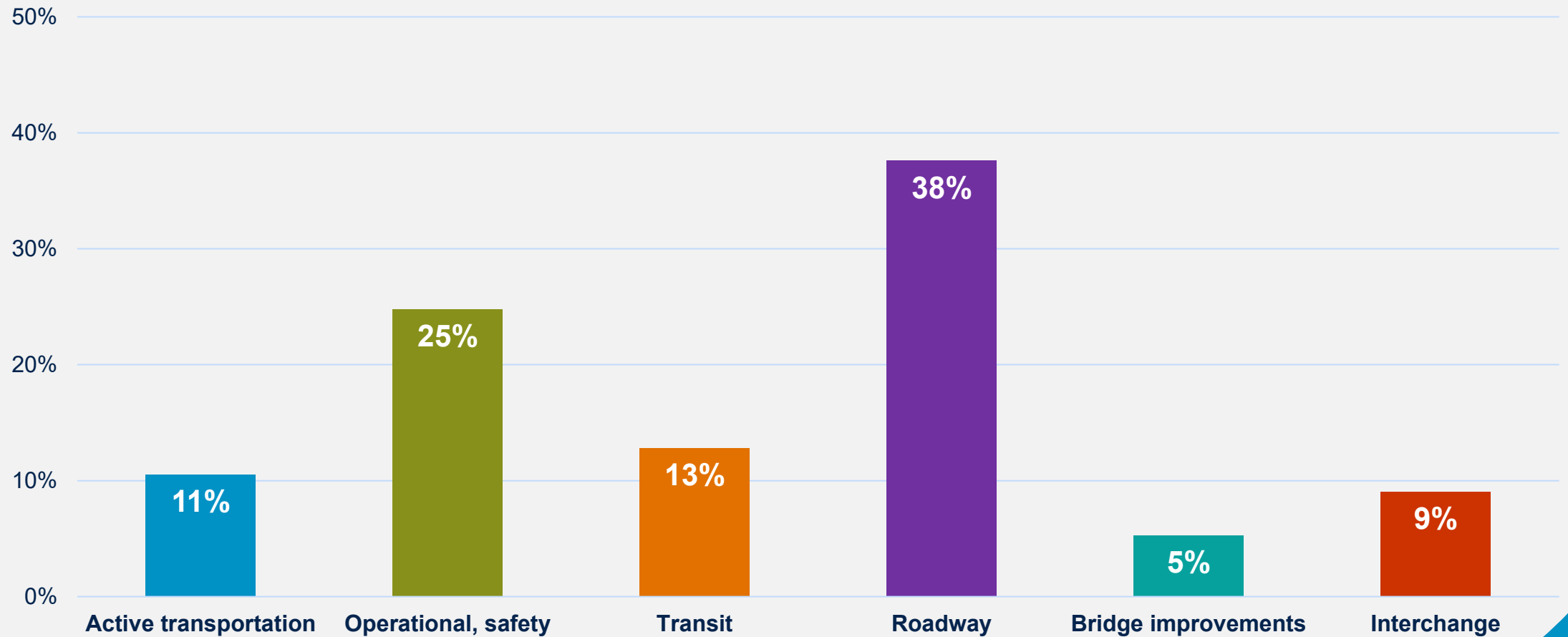
- Projects under construction or in NEPA.
- Projects with construction funding or NEPA funding in the TIP.



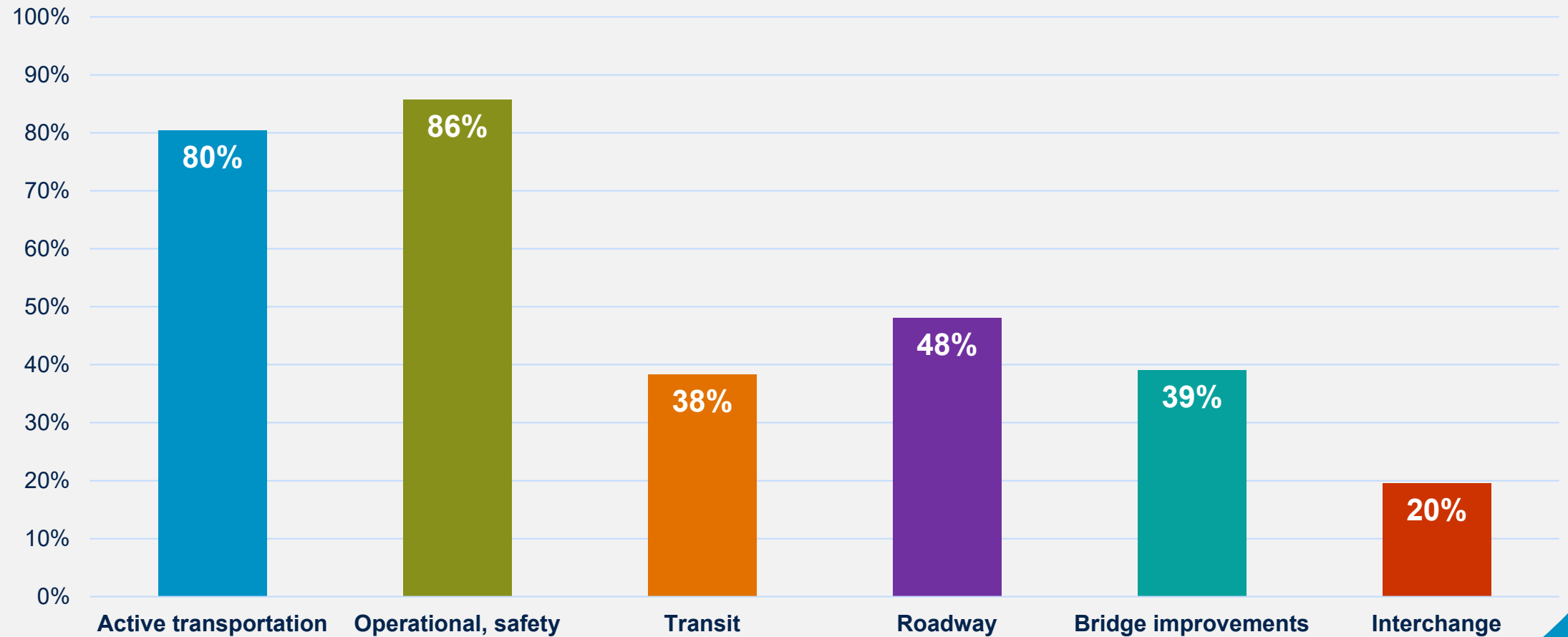
Candidate submittals



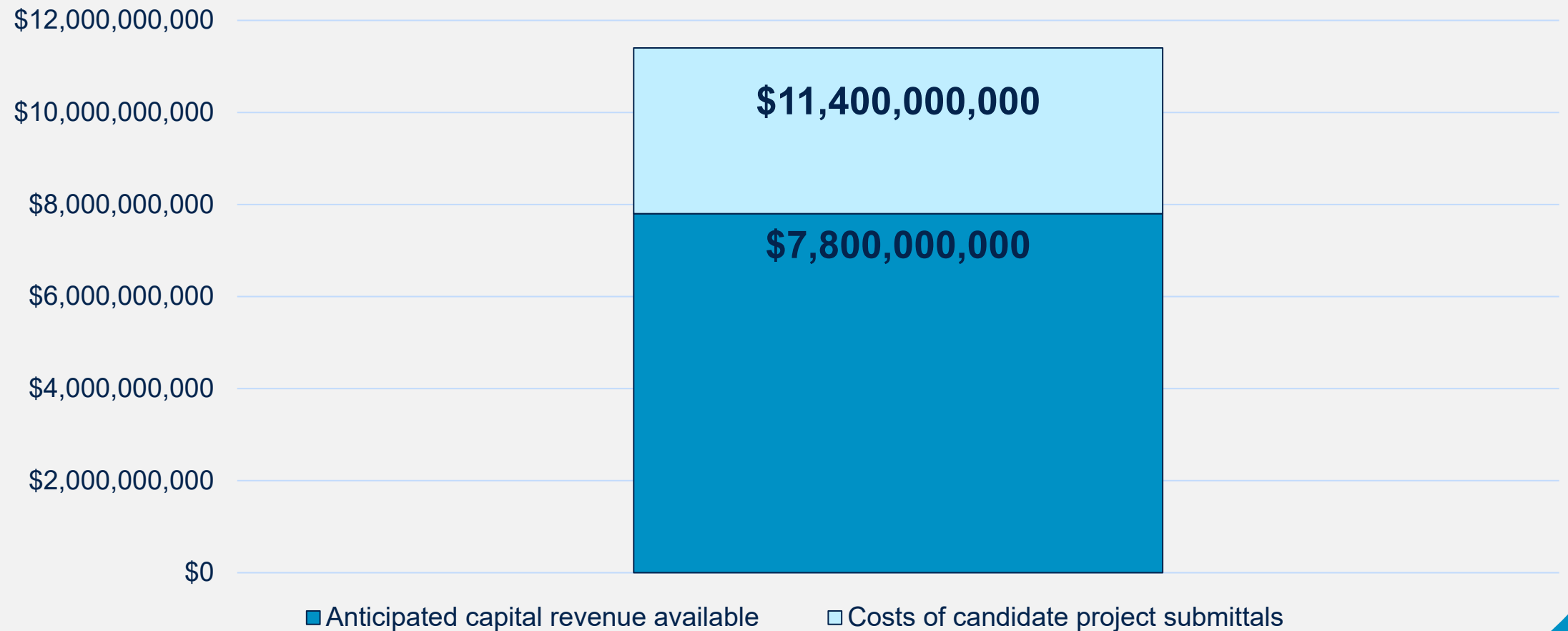
Project types (primary improvement)



Project elements (included in submittals)



Anticipated project revenue available versus cost of submittals



Evaluation process

- **Regional Review Panel** made up of DRCOG, CDOT, RTD staff, and County Transportation Forum representatives met three times in November.
- Investment priorities evaluated against **Metro Vision Themes** and **RTP Priorities**.
 - Additional information will be provided on **congestion mobility scores**, an analysis leveraging the **Equity Index**, **forum prioritization**, and **public feedback** to date.
- This evaluation was combined with the **draft financial plan** and **coordination** between all partner agencies to determine **draft program and project investment priorities**.

Evaluation framework

Metro Vision objectives

Multimodal
mobility

Freight

Active
transportation

Safety

Air quality

Regional
transit

Evaluating priorities



Regional Partner check-ins

(CDOT R1 and R4,
DRCOG, and RTD)



Regional Review Panel meetings

(County transportation forums)

Purpose of the Regional Review Panel

- **Represent forum perspectives** as investment priorities are evaluated.
- **Share experiences** through county transportation forum process.
- Provide **additional feedback** and **considerations** to identify plan priorities.
- **Review draft recommendations.**

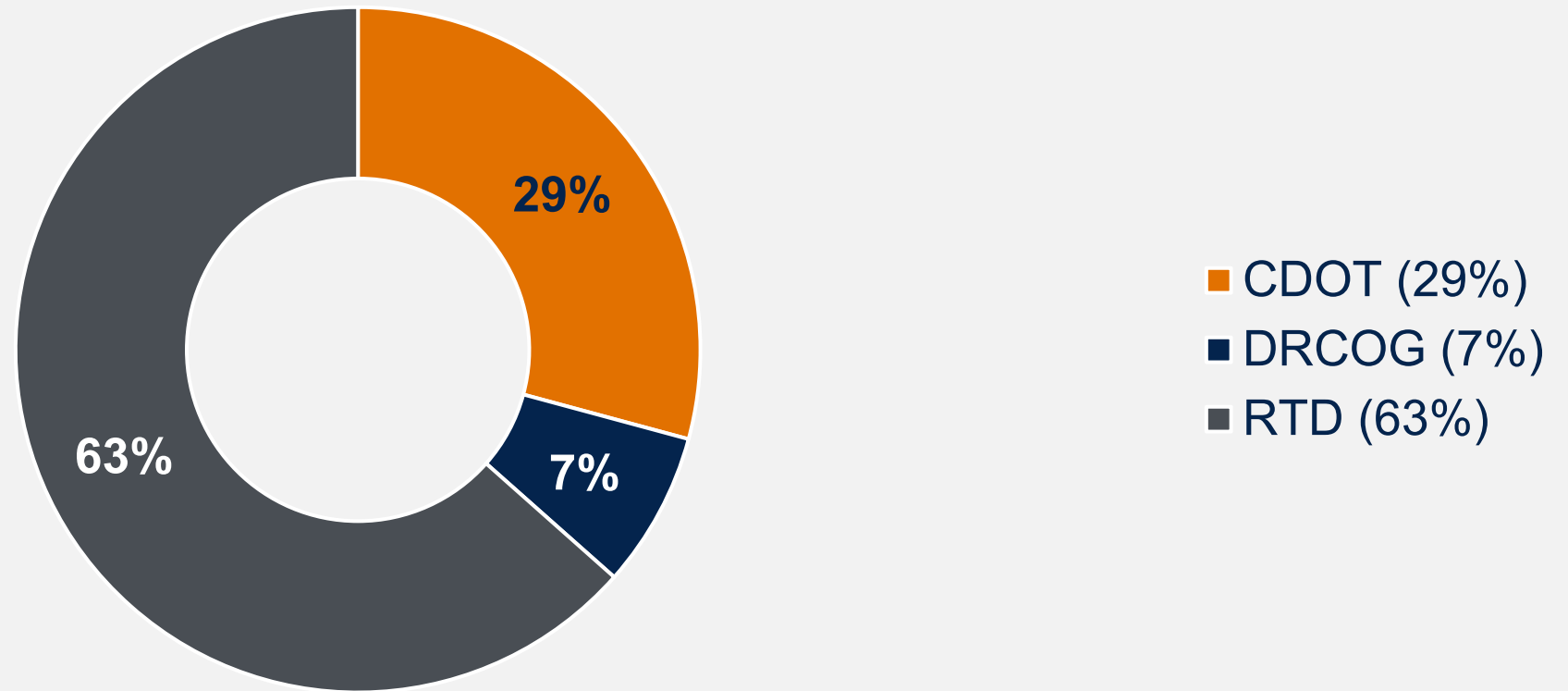




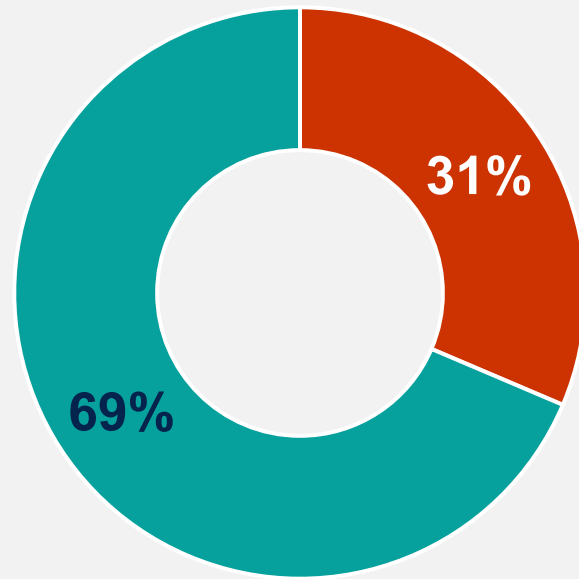
Purpose of the Regional Partner check-ins

- Review candidate project submittals **in comparison to regional priorities.**
- Coordinate on submittals that impact **regional partner's facilities or services.**
- **Workshop** and **draft** recommendations.
- Align draft recommendations with **regional partner's own planning priorities.**

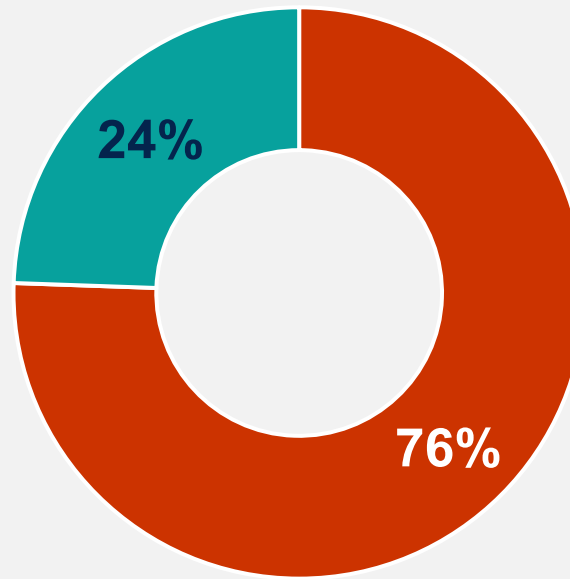
Regional partners anticipated revenue



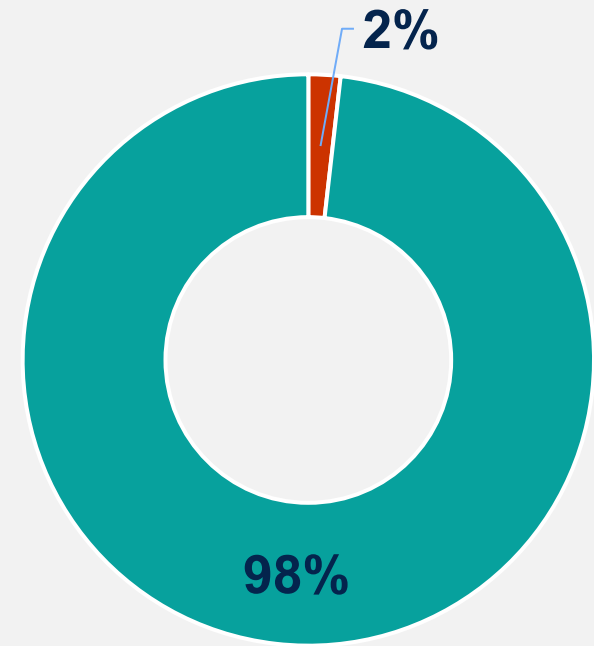
Regional partners project versus program revenue breakdown



■ CDOT projects
■ CDOT programs

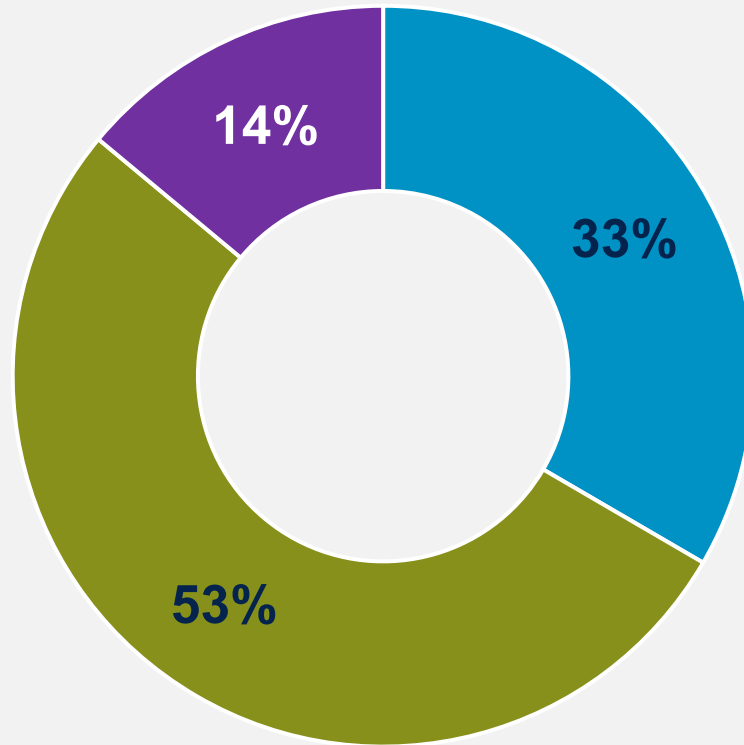


■ DRCOG projects
■ DRCOG programs



■ RTD projects
■ RTD programs

Breakdown of funding between recommended projects (new, resubmittal, carry-over)



- Carry-over projects (33%)
- Resubmitted projects (53%)
- New projects (14%)

Engagement highlights

320

Survey
Responses

1,493

People reached
at pop-up
events

34

Focus group
members

People **prefer improving transit, bike/ped infrastructure, and maintenance** over adding new lanes and roads.

54% of survey respondents ranked expand transit as high and 58% ranked increase frequency as high.

74% of survey respondents said general use lanes should have **low funding** priority or **no funding**.

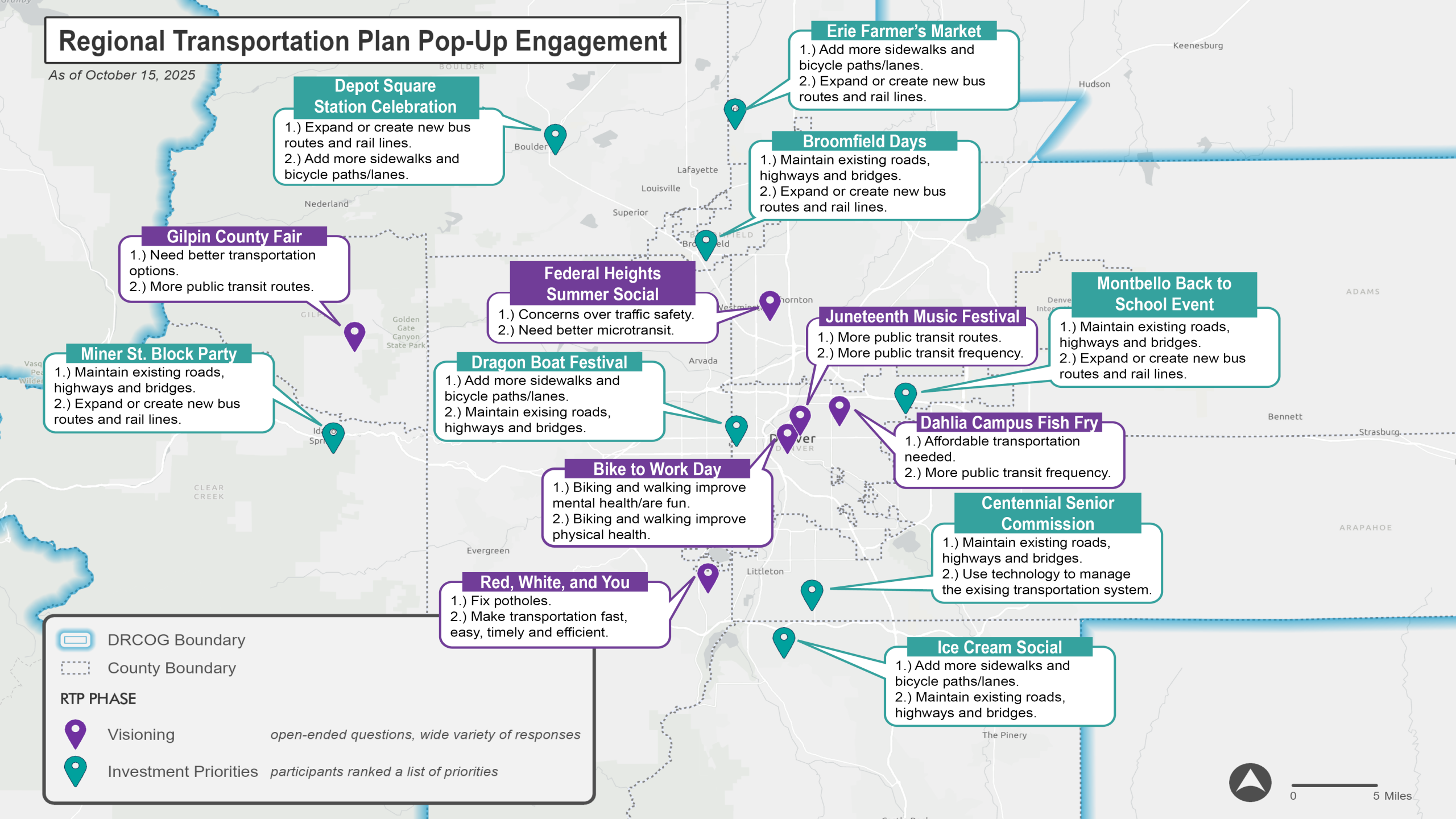
68% of survey respondents said adding **more sidewalks and bike lanes** was a high priority.

Focus group participants had similar sentiments but also **emphasized maintenance**.

Safety was a frequent topic at pop-up events.

Regional Transportation Plan Pop-Up Engagement

As of October 15, 2025



DRCOG Boundary

County Boundary

RTP PHASE



Visioning

open-ended questions, wide variety of responses



Investment Priorities

participants ranked a list of priorities



0 5 Miles

Next steps

- December 16: **Regional Transportation Committee** meeting.
(informational briefing)
- January 21: **Board of Directors** meeting. (informational briefing)
- January 20: **Regional Transportation Committee** meeting.
(recommended approval)
- January 21: **Board of Directors** meeting. (for approval)

Contact information

Alvan-Bidal Sanchez, AICP
Program Manager
asanchez@drcog.org

If you need digital accessibility assistance, submit a request at drcog.org/access or call 303-455-1000. Please expect a response within 72 hours (three business days).