



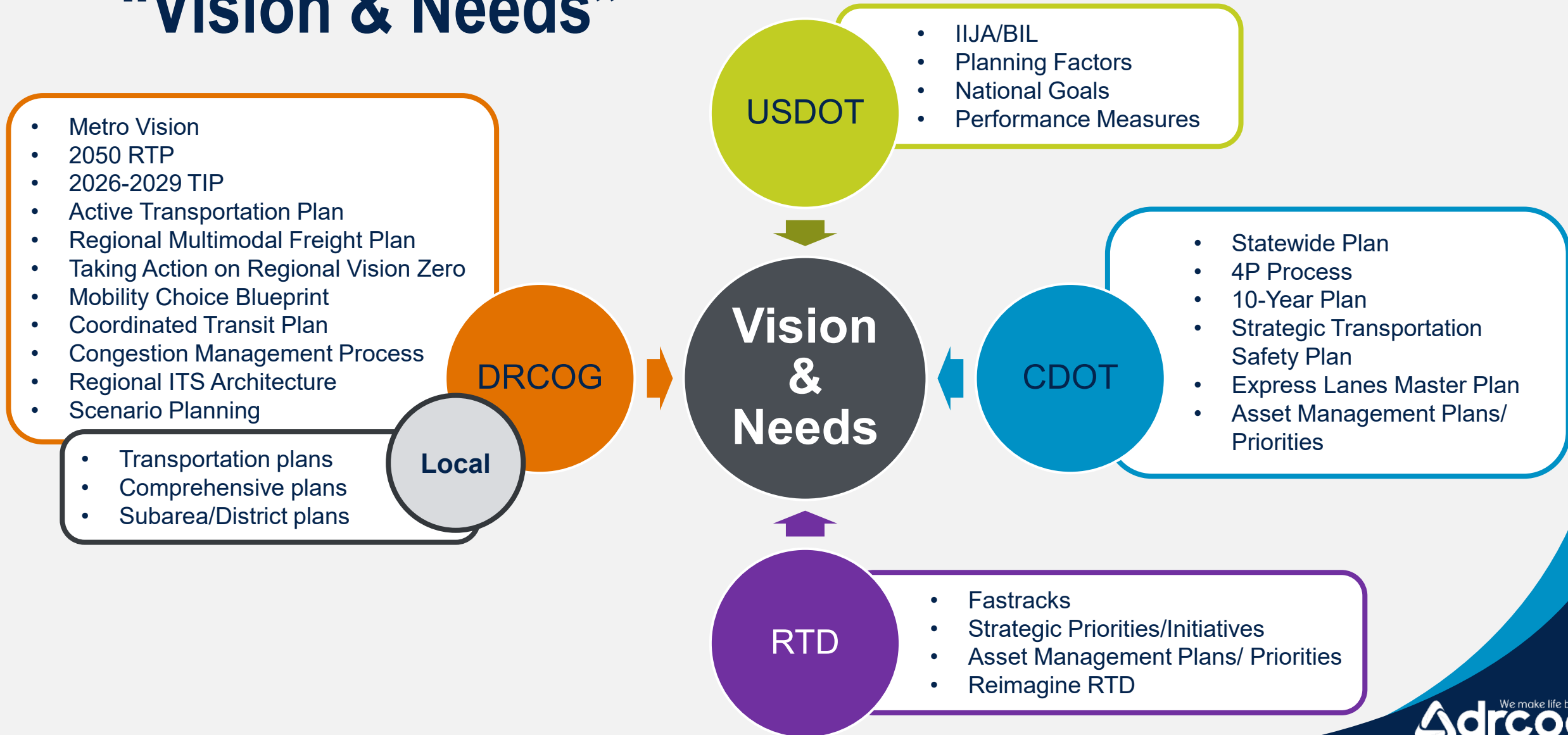
Photo Credit: Colorado Department of Transportation

Regional Transportation Plan solicitation framework

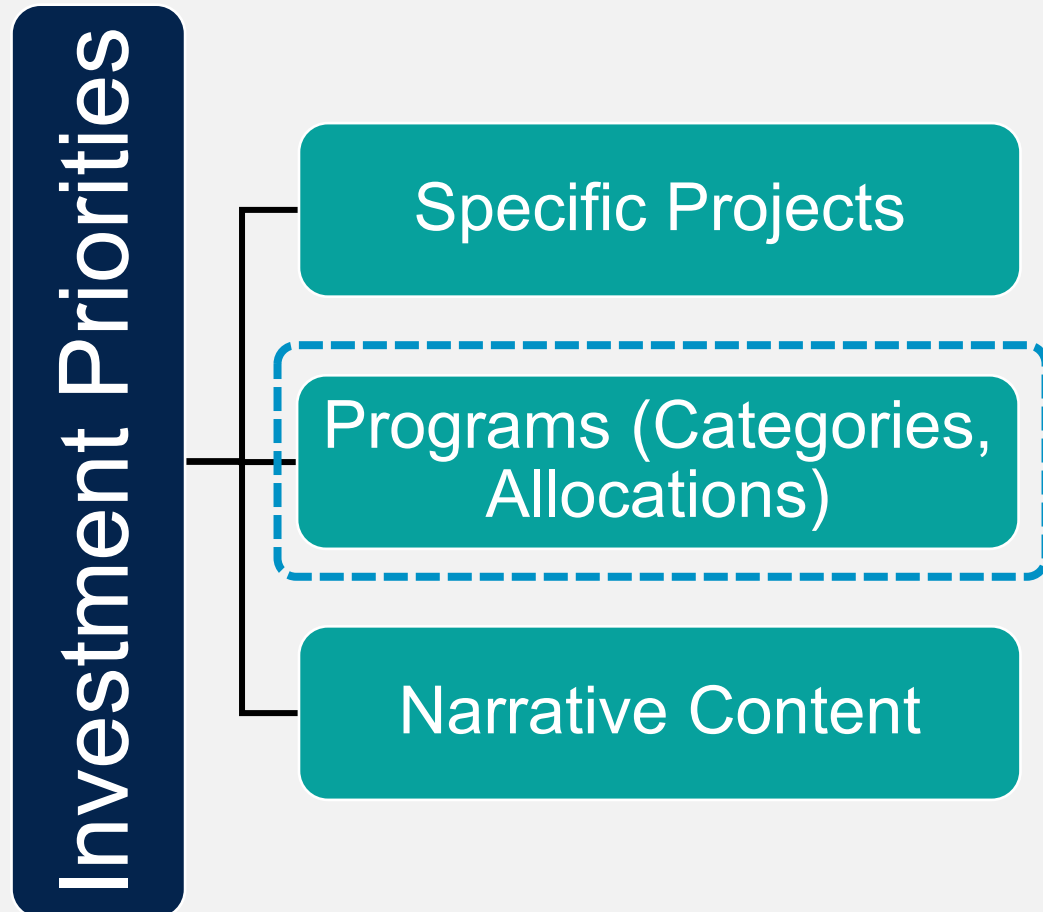
Transportation Advisory Committee: July 28, 2025



“Vision & Needs”

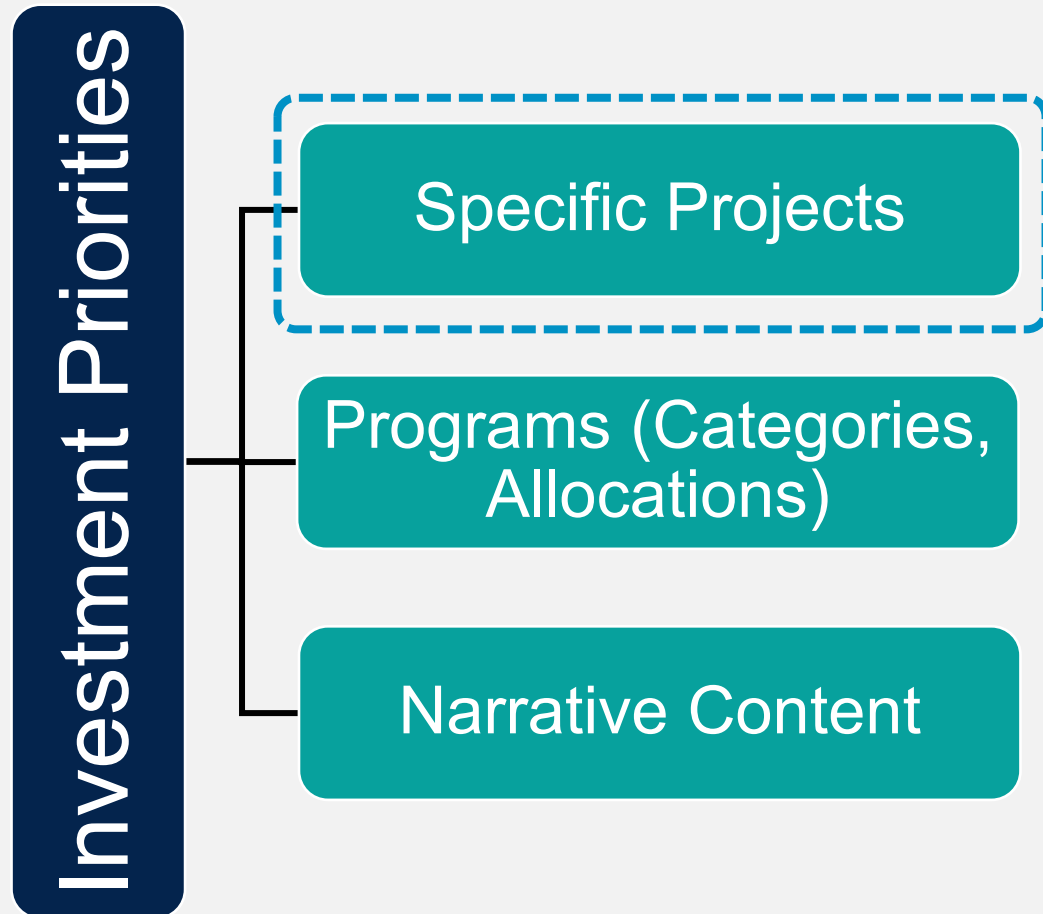


Expressing programs in the RTP



- Generally determined through **DRCOG, CDOT, RTD coordination:**
 - Maintenance, preservation, rehabilitation.
 - Operations and technology.
 - Transit service.
 - Sidewalks, bicycle facilities.

Expressing projects in the RTP



- Must be included:
 - **Roadway widenings** of one center-line mile or more on the regional roadway system.
 - **New interchanges** and interchange improvements that add or delete travel movements (**new or deleted ramps**).
 - New rapid transit lines (**light rail, commuter rail, bus rapid transit**).
- Does not include:
 - Local roads (**changes not on the regional roadway system**).

Project types included in the RTP

Must be included in the plan. **Appendix I: Regionally Significant Project Criteria.**



Regionally significant **roadway capacity**.



Regionally significant **rapid transit capacity**.



Safety and **Complete Streets** improvements. (arterial safety, Vision Zero, Complete Streets retrofits).



Active transportation improvements. (bicycle facilities, pedestrian facilities, trails).



Freight improvements. (bridge reconstructions, overpasses/underpasses, new bridges).



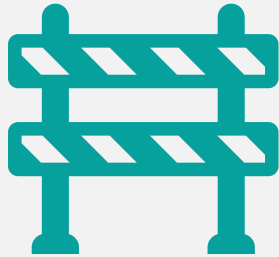
Corridor planning – roadway and transit. (generalized corridors/concepts).

Current 2050 RTP projects



**Projects
to be
complete
by 2025**

**No need to
include**



**Projects
under
CONST or
in NEPA**

**Will be
automatically
included**



**Projects with
NEPA/
CONST funds
in the S/TIP**



**Projects
planning for
pre-NEPA
studies**

**Can be submitted for
evaluation**

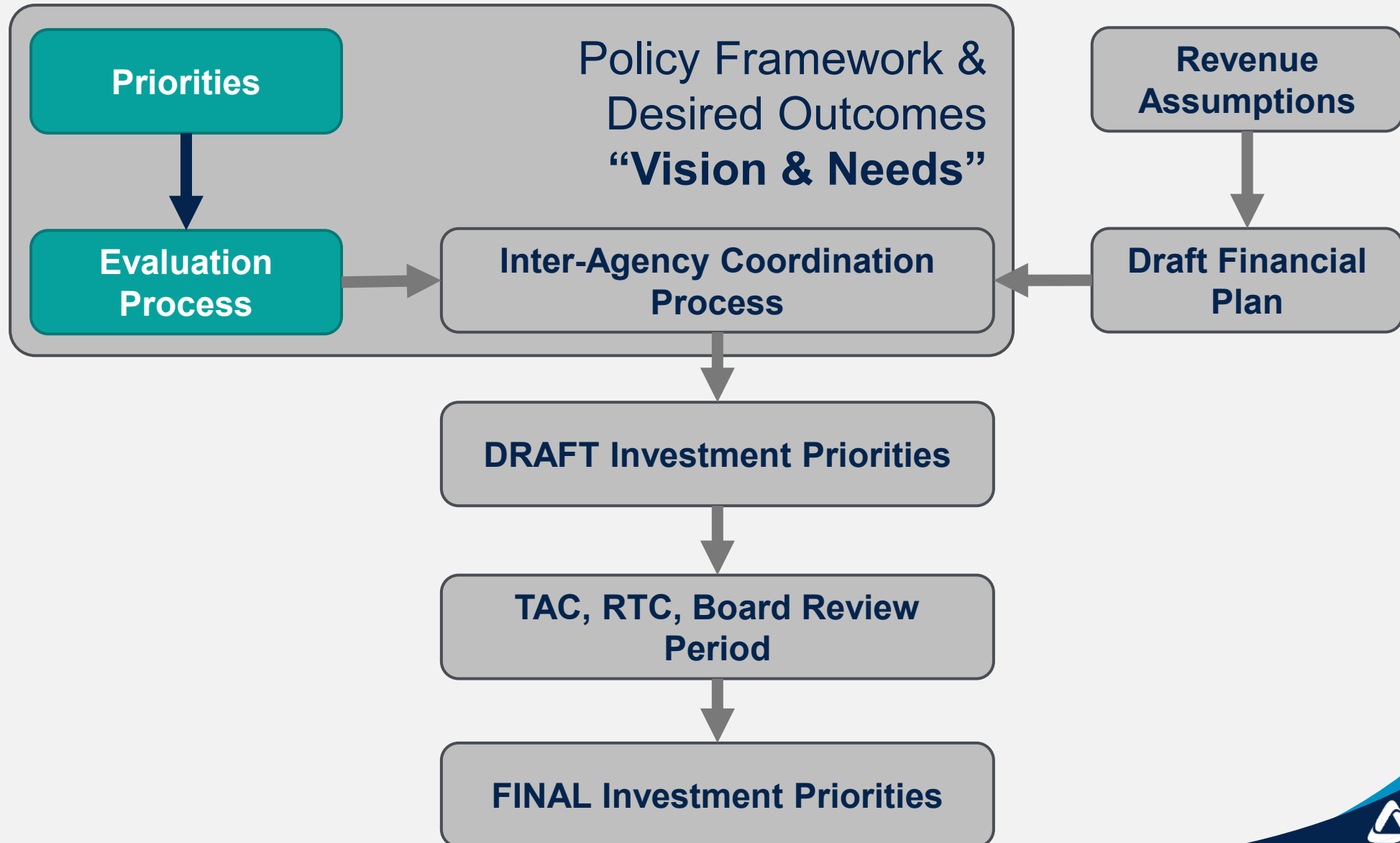


**Other 2050
projects**



**Locally
funded
projects**

Framework for including investment priorities



Identifying priorities

Interagency priorities

*Represent the greatest transportation needs **for the region** as determined by **DRCOG**, **CDOT**, and **RTD**.*

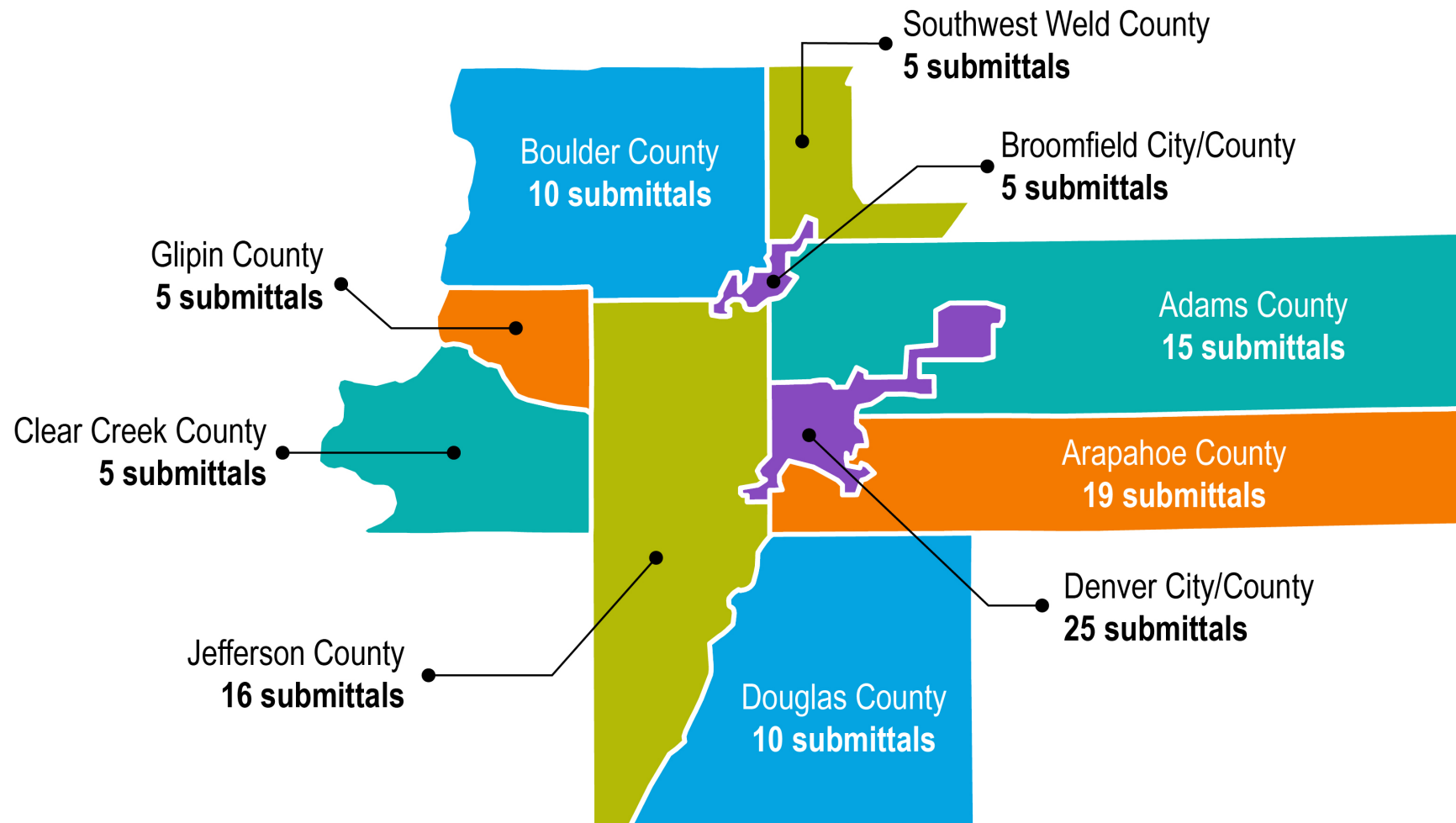
- DRCOG, RTD, CDOT submittals.
- Focused on interstate, US/CO highway, and rapid transit projects.

Subregional priorities

*Represent the greatest transportation needs **for each county/forum area** as determined by each of the **forums**.*

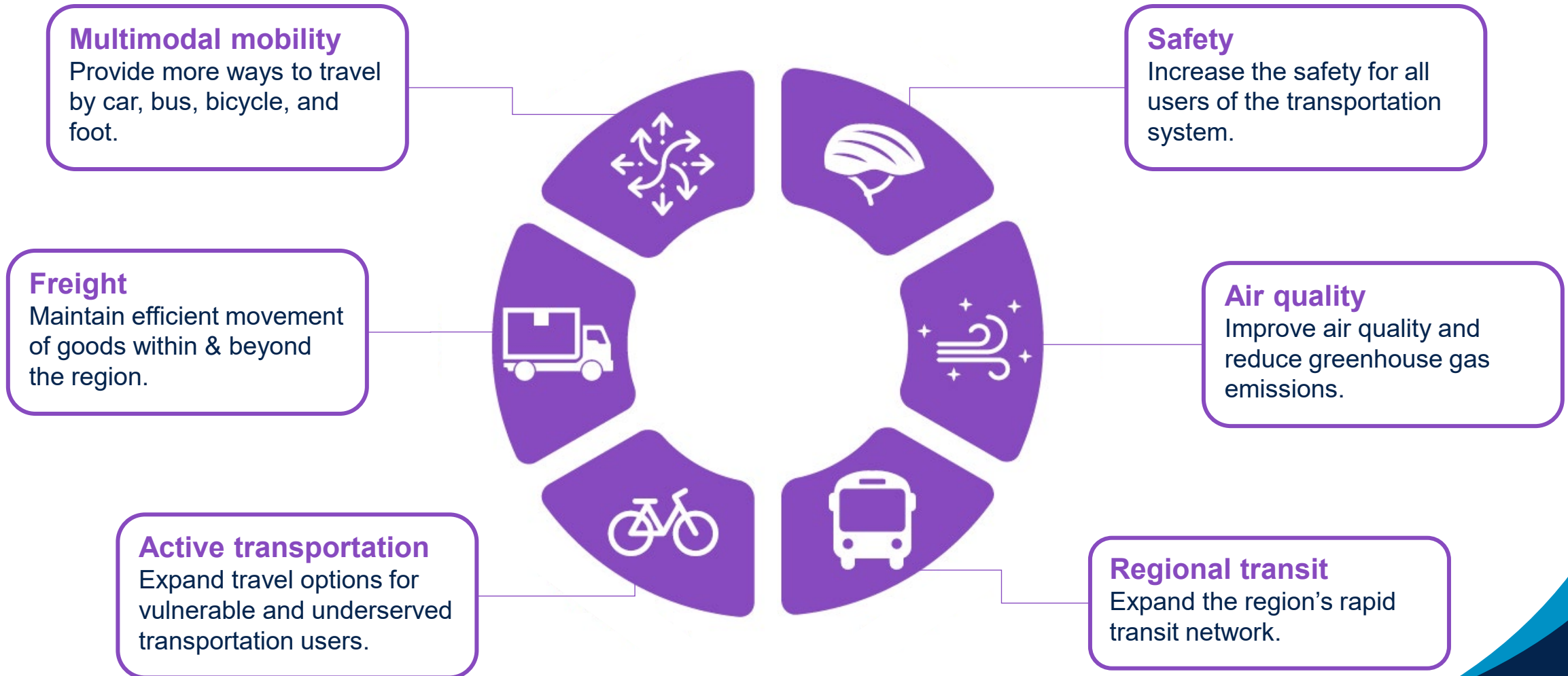
- Transportation forum solicitation submittals.
- Focused on non-interstate projects, except new interchange proposals.

Subregional candidate project submittals



Average of
**population +
employment +
vehicle miles
traveled**

Evaluation framework – six RTP priorities



Evaluation criteria – Metro Vision

- Metro Vision Theme: **An Efficient and Predictable Development Pattern.**
 - Increase housing and employment in urban centers. (Yes/No).
- Metro Vision Theme: **A Connected Multimodal Region.**
 - Operate, manage and maintain a safe and reliable transportation system (High/Medium/Low).
 - TPM: Improve pavement and/or bridge condition. (High/Medium/Low).
- Metro Vision Theme: **A Safe and Resilient Natural and Built Environment.**
 - Reduce the risks of hazards and their impact. (Yes/No).

Evaluation criteria

- **Multimodal mobility** – Provide more ways to travel by car, bus, bicycle, and foot. (High/Medium/Low).
 - Increase access to amenities that support healthy, active choices. (Yes/No).
 - Improve transportation connections to health care facilities and service providers. (Yes/No).
 - Connect people to natural resource and recreational areas. (Yes/No).
 - Increase access to amenities that support healthy, active choices. (Yes/No).
 - Improve transportation connections to health care facilities and service providers. (Yes/No).

Evaluation criteria, continued

- **Freight** – Maintain efficient movement of goods within & beyond the region.
 - Improve access to opportunity. (Yes/No).
 - Improve the region's competitive position. (Yes/No).
 - TPM: Improve total and/or truck travel time reliability. (High/Medium/Low).
 - TPM: Reduce peak hour delay and/or increase mode choice. (High/Medium/Low).
- **Active transportation** – Expand travel options for vulnerable and underserved transportation users. (High/Medium/Low).
 - TPM: Reduce peak hour delay and/or increase mode choice. (High/Medium/Low).

Evaluation criteria, continued

- **Safety** – Increase the safety for vulnerable road users of the transportation system. (High/Medium/Low).
 - TPM: Reduce fatalities and serious injuries, especially for non-motorized travel. (High/Medium/Low).
- **Air quality** – Improve air quality and reduce greenhouse gas emissions.
 - Improve air quality and reduce greenhouse gas emissions. (High/Medium/Low).
- **Regional transit** – Expand and maintain the region's rapid transit network and transit options. (High/Medium/Low).
 - TPM: Improve transit safety. (High/Medium/Low).
 - TPM: Improve transit asset management/State of Good Repair. (High/Medium/Low).

Evaluation framework – max 48 points

Metro Vision objectives (max 8 points)

Multimodal
mobility
(max 8 points)

Freight
(max 8 points)

Active
transportation
(max 6 points)

Safety
(max 6 points)

Air quality
(max 3 points)

Regional
transit
(max 9 points)

Evaluation process

- **Regional Review Panel** made up of DRCOG, CDOT, RTD staff, and County Transportation Forum representatives.
- Investment priorities evaluated against **RTP Priorities**. (Yes/No; High/Medium/Low).
 - Additional metrics related to **Metro Vision** and **federal performance measures** will be incorporated.
- This evaluation will be combined with the **draft financial plan** and **coordination** between all partner agencies will determine **draft program and project investment priorities**.

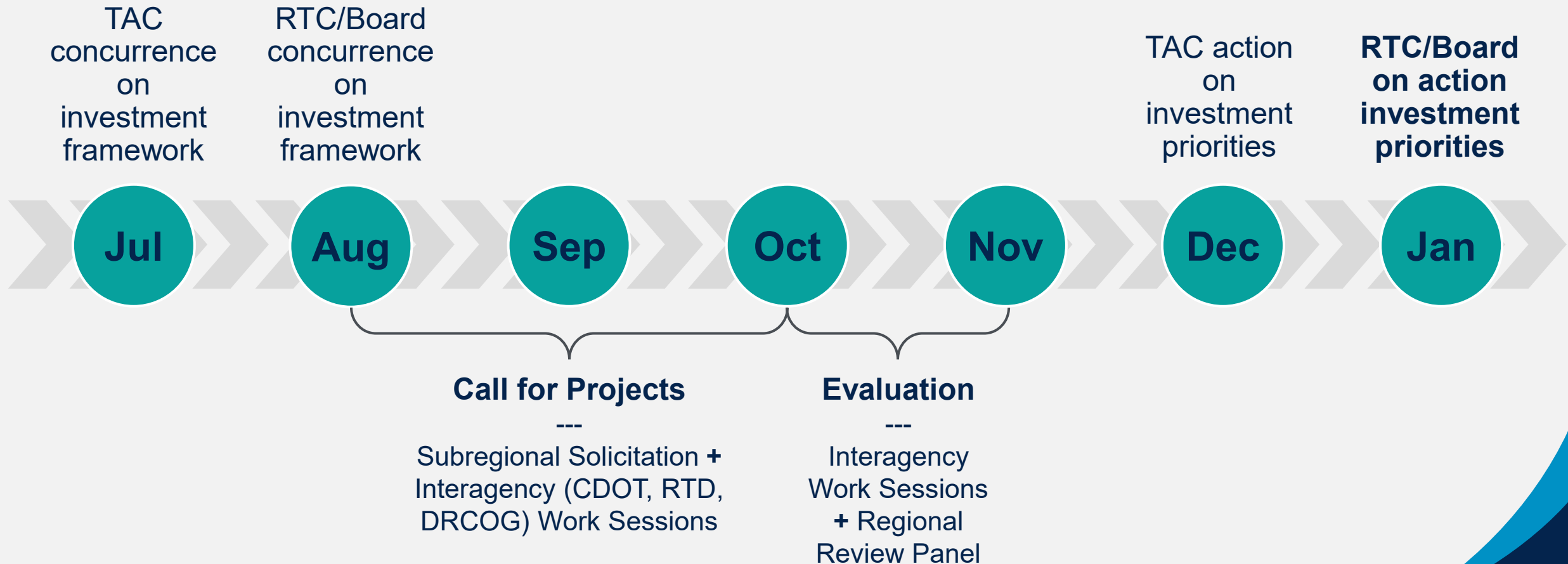
Solicitation details

- **Call for Projects:** August 25 – October 10. **(Tentative).**
- **Submittal information:**
 - Solicitation form through Formstack.
 - Additional documentation, as applicable.
 - GIS shapefile, as applicable.
- **Eligible agencies:**
 - Only public sector agencies (municipal/county governments, CDOT, and RTD) can submit for projects to be included in the 2050 RTP.
 - Only RTD can submit Fastracks rapid transit projects.
 - Only private toll companies or toll highway authorities can submit toll road projects (E-470, NW Parkway, Jefferson Parkway).

Information requested

- Basic project information:
 - County forum.
 - Project Sponsor.
 - Project name.
 - Location/limits.
 - Description.
 - Cost.
 - Year of completion.
- Justification, rationale, explanation in response to the criteria.

Tentative timeline



Contact information

Alvan-Bidal Sanchez, AICP
Program Manager
asanchez@drcog.org

If you need digital accessibility assistance, submit a request at drcog.org/access or call 303-455-1000. Please expect a response within 72 hours (three business days).